

# SOUTHEASTERN UNIVERSITY

Welcome to our resort-style campus!



RESIDENCE HALLS

- 5 Buena Vida West (Floors 2, 3, 4)
  - 6 Buena Vida East (Floors 3, 4)
  - 12 Bauer Hall
  - 13 Bethany Hall
  - 17 Aventura Hall
  - 21 Destino Hall
  - 20 Esperanza Hall
  - 19 South Pointe
  - 1 Valencia
- Plus Buttercup Housing

ACADEMIC BUILDINGS

- 5 Buena Vida West (Floor 1)
- 6 Buena Vida East (Floors 1, 2 – Arts & Media, Behavioral Sciences, & Business)
- 4 College of Natural & Health Sciences
- 7 College of Education (Plus Pathways School)
- 2 Bolin Hall/Barnett College of Ministry & Theology
- 15 Steelman Library

DINING & COMMUNITY SPACES

- 16 Tuscana Ristorante
  - 11 Pansler Alumni-Student Union (Portico Coffeehouse, Mi Casa Café and Chick-fil-A)
  - 5 Buena Vida Food Court
  - 3 Bush Chapel
- Plus Alta Vista Plaza  
Brown Plaza  
Hennessy Plaza  
Kelly Gardens  
Lambert Plaza  
The Quad

ADMINISTRATION/CAMPUS SERVICES

- 9 Welcome Center
  - 11 Pansler Alumni-Student Union
  - 10 Addison Hall
  - 22 Facilities Management
  - 18 Laundromat
- Plus Help Desk (IT)  
Main Campus Entrance/Security  
Security Office

ATHLETIC FACILITIES

- 24 Victory Field
  - 8 Student Activities/Wrestling Center
  - 23 The Furnace
- Plus Aquatic Center  
Destino Intramural Field  
Soccer Field  
Softball Field  
Ted Broer Baseball Stadium  
Tennis Courts

MODULAR BUILDINGS

- M28 Academic Advising
- M1 Business Office
- M29 Career Services
- M2 Classroom
- M4 Classroom
- M5 Classroom
- M7 Faculty Offices
- M8 Commuter Services
- M6 Dual Enrollment & OSPAR
- M11 Information Technology
- M9 JCBEL Offices
- M10 International Students & Study Abroad
- M12,13 Nursing
- M27 Registrar
- M3 Research/IRB Lab

# Campus Highlights

Take a closer look at our beautiful campus in Lakeland, Florida



**6 Residence Halls** Our residence halls consist of two, four, five, and eight-man dorm suites that are gender-specific. While freshmen reside in either Bauer or Bethany Hall, students of any year live in Buena Vida, Valencia, South Pointe, Aventura, Esperanza, and Destino. Each hall hosts special events and has access to numerous amenities such as 24-hour security, laundry facilities, counseling services, and various dining options.

**Bolin Hall** Bolin Hall houses the Barnett College of Ministry and Theology. Barnett College professors have all been, or are currently, practitioners in ministry, allowing students to gain both professional connections and personal experience in ministry. Our College of Arts & Media (CAM) offers hands-on learning in Bolin Studio, such as producing television, film, and radio programs to showcase students' talents and keep our campus informed.



**3 Bush Chapel** We offer multiple chapel services throughout the week to help students develop spiritually, despite coming from different denominational and personal backgrounds. On-campus students are required to earn 30 chapel credits per semester; off-campus students are required to earn 10. Bush Chapel is also the home of many campus events and traditions throughout the year.

**College of Natural & Health Sciences** This building has laboratory classrooms for chemistry, biology, computer and general science courses along with a 120-seat auditorium. The College of Natural & Health Sciences also features a high-tech Anatomage digital dissection table, and a nursing simulation lab with four state-of-the-art human patient simulators.

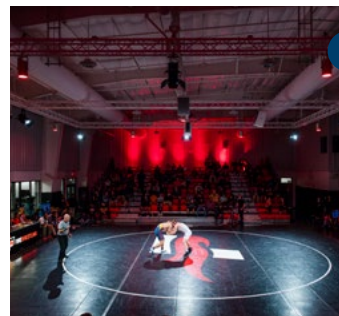


**5 Buena Vida West** The first floor of Buena Vida West contains an auditorium for large lectures and a food court with three dining options including Einstein Bagels, Papa John's Pizza, and Backyard Burger. The remaining floors are designated for male dorms and lobby spaces.



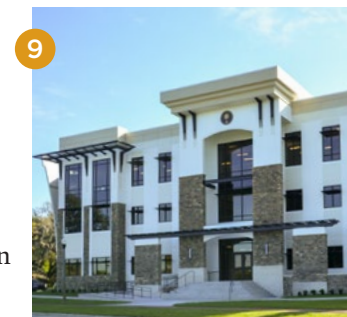
**6 Buena Vida East** The first two floors of Buena Vida East consist of classroom space for courses in arts and media, behavioral and social sciences, and business in addition to the ACE tutoring center and ADA and testing services. Faculty offices are housed in the mezzanine level. Female dorms and lobby spaces reside on the third and fourth floors of the building.

**College of Education** Students in the College of Education benefit from access to learning labs equipped with SMART Boards, domestic and foreign field study options, and training for numerous teaching certifications. This building also houses our Department of Human Performance, which offers degrees in kinesiology and sport management. The College of Education building is also home to Pathways School of Excellence, a school for middle and high school students with special needs.



**8 Student Activities/Wrestling Center** Also known as the SAC, this building is the site of general, wellness, and sporting events. Students enjoy activities, such as our Church Expo and intramurals, and support our award-winning wrestling team. Our weight room is available to all students and updated with new equipment on a regular basis.

**Welcome Center** The Welcome Center serves as the front door to the university. Upon entering, interactive displays immerse visitors and prospective students in the SEU Experience. For your convenience, the Enrollment and Advancement offices are located on the ground floor, while administrative offices and a banquet and catering facility can be found on the second and third floors.



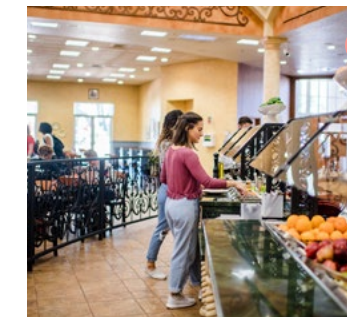
**10 Addison Hall** SEU aims to make your college experience as affordable as possible. Visit Financial Aid, located on the second floor, to find information about scholarships, loans, payment plans, and other aid opportunities.

**Pansler Alumni-Student Union** Inside Pansler is Portico Coffeehouse, The Market at Mi Casa Cafe, and Chick-fil-A Express, along with our campus bookstore and multiple student support offices.



**14 Smith Hall** Smith Hall contains our Human Resources and Health Services offices. The latter treats minor illnesses and injuries and offers referral services to local physicians and ambulatory facilities. Human Resources is the place to go to learn about and apply for our 500+ on-campus job opportunities.

**Steelman Library** Steelman Library contains over 100,000 volumes, over 70 computers and laptops for student use, and access to over 400,000 textbook and periodical titles available via an internet database. Couches and chairs provide comfort while studying.



**16 Tuscanca Ristorante** Tuscanca Ristorante is our main campus dining location, with meals offered in an all-you-can-eat buffet & cafeteria style. Our serving stations include a beverage bar and breakfast, pasta, pizza, grilled, vegan, dessert, and gluten free options.

**The Furnace** Located within the Sportsplex, the Furnace is home to the men and women's basketball and women's volleyball programs. The arena seats 1,200 and includes a full-length basketball court for varsity contests and the option to occupy two volleyball courts. The Furnace is next door to the Aquatics Center where students can swim or take an elective Scuba class.



**24 Victory Field** SEU's football team has won multiple conference championships! In addition to tailgating and football games, students can be found on Victory Field for events like intramurals and volunteering when we host the Special Olympics.

# Other Resources

## Modular Offices

**M10: International Students & Study Abroad** We help international, missionary, and intercultural students adjust to the college environment, transition into the United States, maintain nonimmigrant student status, and resolve other immigration issues as needed. From studying in the wilderness to traveling to the Middle East, SEU's study abroad program has domestic and foreign opportunities for students to attain hands-on experience in their intended career field, or to explore new opportunities.

**M27: Registrar** The Office of the Registrar oversees class registration, the university course catalog, transcripts, and much more.

**M28: Academic Advising** Our academic advising team provides guidance on which classes to take, and when, in order to help you stay on track and graduate on time.

**M29: Career Services** Looking for a job or internship? The Center for Calling and Career (COMPASS) helps students discern God's call for their lives and find a job/internship on or off campus. COMPASS also provides opportunities to learn interviewing and networking skills.

[Experience our virtual campus visit.](#)  
[Your story starts at SEU. Apply now.](#)

