



# FACT BOOK

2023-2024

A church service scene with a man singing on stage and a large screen displaying lyrics. The stage is lit with red and blue lights. The audience is seen from behind, looking towards the stage. The lyrics on the screen are "GOD YOU FOUND ME AND YOU'LL ALWAYS HAVE ME".

GOD YOU FOUND ME  
AND YOU'LL ALWAYS HAVE ME

*Discover & Develop  
Your Divine Design*



Office of Institutional Research

**Dr. Cody Lloyd**

Vice President, Institutional  
Research & Effectiveness, CIO  
cjlloyd@seu.edu

**Dr. Kenneth Reaves**

Director, Research & Strategic Projects  
kmreaves@seu.edu

**Ms. Jordan Kleinhenn**

Director, Institutional Research  
ljkleinhenn@seu.edu

*Published in October 2023*

© 2023 Southeastern University  
1000 Longfellow Blvd.  
Lakeland, Florida 33801

## Table of Contents

Board of Trustees.....	2	Enrollment by Gender.....	62
Mission & Vision.....	3	Enrollment by Race & Ethnicity.....	64
Strategic Plan.....	4	Enrollment by State/U.S. Territory..	66
History of Southeastern.....	5	International Enrollment.....	68
Points of Excellence.....	7	Enrollment by Denomination.....	70
Alumni Relations.....	8	Faculty Division & Rank.....	72
Accreditation.....	10	Instructional Faculty.....	74
Institutional Memberships.....	11	Instructional Faculty Demographics..	76
Organizational Charts.....	12	Student-to-Faculty Ratio.....	77
Athletics.....	24	Faculty & Staff.....	78
Clubs & Organizations.....	26	New Students by Delivery Type.....	80
Library & Computer Resources.....	27	Applications for Freshman Admission.....	82
Missions.....	28	SAT, ACT & GPA for Entering Freshmen.....	84
Tuition & Fees.....	30	Completions.....	86
Tuition, Room & Board Comparison...	34	Retention Rates.....	92
Financial Aid.....	36	Graduation Rates.....	93
Academic Programs.....	39	On-Campus Enrollment.....	94
SEU Network.....	44	Housing Capacity.....	95
Honors Program.....	46	Campus Housing.....	96
Enrollment by Delivery.....	49		
Enrollment by Major.....	52		
Total Enrollment.....	58		
Full-Time Equivalency Enrollment...	60		



## Board of Trustees

Dr. Terry Raburn | Chairman

Dr. M. Wayne Blackburn | Vice Chairman

Rev. John Jordan | Secretary

Dr. Kent Ingle | President

Rev. Tommy Barnett | Chancellor

Rev. Abner Adorno

Rev. Roger Archer

Rev. Luke Barnett

Dr. Mark Batterson

Rev. Kenneth Draughon

Rev. Mark Jakelsky

Rev. Steve Mason

Rev. Ricardo Orsini

Dr. Jeffery Portmann

Mr. Matthew Potter

Rev. Judy Rachels

Rev. Ray Rachels

Dr. Terry Roberts

Dr. Gabriel Salguero

Rev. Robert Sandler

Mr. Scott Williams

Dr. Doug Witherup

Rev. John Wootton





## Mission Statement

Equipping students to discover and develop their divine design to serve Christ and the world through Spirit-empowered life, learning and leadership.

## Vision Statement

Southeastern University is anchored by Spirit-empowered education in a Christ-centered, student-focused learning community. Southeastern's global impact is marked by a deep commitment to transforming minds and engaging culture through the integration of faith, learning and service. Each student's divine design is nurtured and unleashed through the investment of faculty and staff, relationships within the community, the rigor of scholarship, diverse learning experiences and the discipline of spiritual formation, which propels students into a lifetime of serving the world in the Spirit of Christ.





# Strategic Plan

## Our Core Values

1. A university absolutely committed to Christ-like formation
2. A university of educational breadth and depth
3. A university of faculty distinction
4. A university that thinks globally
5. A university committed to serving human needs in our community and in communities around the world
6. A university characterized as a community of grace
7. A university that is student-focused at all times

## Our Five-Year Plan

To create a university of curricular, co-curricular and experiential excellence with a faculty of distinction, diverse student population, strong financial base, and a culture of high performance and quality.



## History of Southeastern University

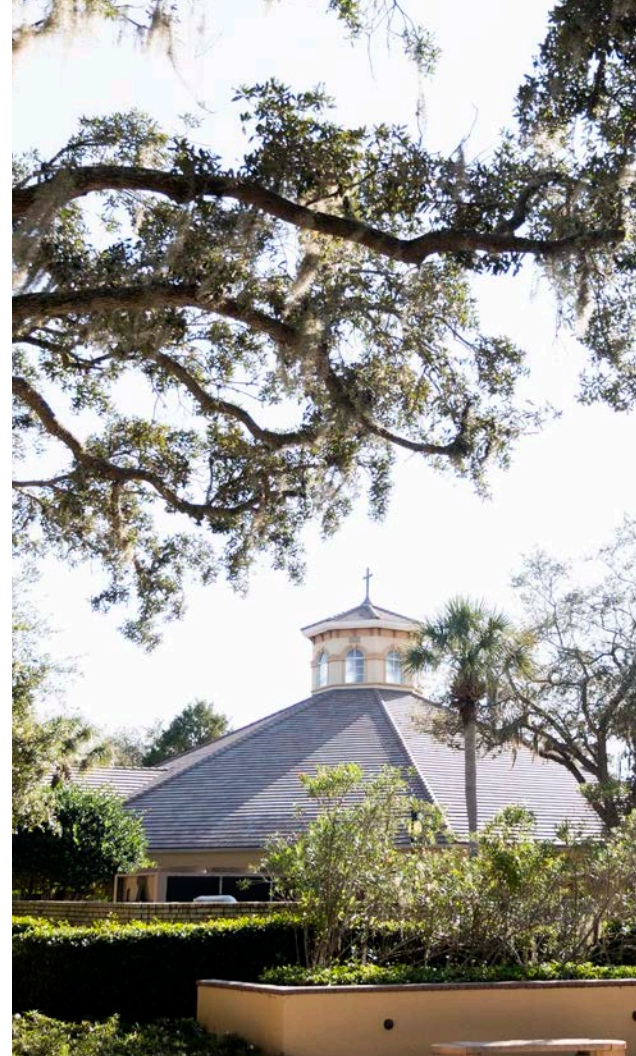
Southeastern University was founded in 1935 by the Assemblies of God Alabama District Superintendent J.C. Thames and other Southeastern District leaders.

Originally named the Alabama Shield of Faith Institute, it was renamed the South-Eastern Bible Institute (SEBI) in 1936. Guy Shields was the first president.

Originally located in a former high school building in New Brockton, Alabama, the school opened its doors to students on November 4, 1935, under the direction of four faculty members. Two years later, on May 22, 1937, the first graduation exercises were held. Seventeen students received diplomas for the two-year academic program.

SEBI continued classes in New Brockton until 1940 when a decision was made to consolidate the school with Beulah Heights Bible Institute in Atlanta, Georgia. The school was known from 1940 to 1942 as the Beulah Heights-South-Eastern Bible Institute. In the fall of 1942, Rev. Ralph Byrd allowed the school to relocate to his congregation at 301-7 Capital Ave., SW in Atlanta, where it then was once again named the South-Eastern Bible Institute.

In 1946, the board of directors voted to secure a permanent location for the full development of the school. A new campus location was purchased later that year in Lakeland, Florida. The Atlanta campus was sold, and development of the new site began. From 1946 to 1952, SEBI was located at the Lodwick School of Aeronautics in Lakeland. In 1952, the school moved to its present location at Longfellow Blvd.





Student body growth continued at the new central Florida campus along with the academic programs. SEBI became South-Eastern Bible College in 1956 when four-year Bachelor of Arts degree programs began. After adding education degrees, the college's board of directors changed the school name to Southeastern College of the Assemblies of God in 1977.

In 1986, Southeastern was granted regional accreditation by the Southern Association of Colleges and Schools Commission on Colleges. This accreditation was reaffirmed in 1991, 2001, 2011 and 2021.

In 2005, Southeastern College officially became Southeastern University, began offering its first Master's degree programs and formed the Colleges of Arts & Sciences, Business, Christian Ministries & Religion, and Education. Since then, the university has also formed the Colleges of Behavioral & Social Sciences and Natural & Health Sciences and, in 2014, began offering doctoral programs.

What began in 1935 as a Bible-training school is now the largest Assemblies of God educational institution in America, producing future Christian leaders in the fields of church ministries, education, medicine, law, business, communication, psychology, social work, literature and music.





## Points of Excellence

### Funding

SEU received \$4 million in appropriated funds from the Florida Legislature to finance the construction and launch of a private, Christian preschool for infants and children up to age four. SEU plans to break ground on the project in the fall of 2024.

The preschool will be rooted in classical education, focusing on milestone- and routine-based learning. Students from SEU's College of Education will have the opportunity to work in the preschool to gain practical, hands-on experience in their field.

In addition to the funds approved for the preschool, the university also received \$500,000 to fund Pathways' Life Skills House project. The purpose of the Life Skills House is to increase opportunities for Pathways students to learn functional living skills and grow their competitive employability.

### Enrollment Growth

SEU has once again been named one of the fastest-growing private non-profit institutions in the country in The Chronicle of Higher Education's 2023-24 almanac. Based upon growth data acquired

between 2011-2021, SEU has been ranked second among doctoral level colleges and universities due to its 268% growth in enrollment.

In addition, SEU was ranked by the U.S. News and World Report as a top performer in Social Mobility.

### Academic Programs

This year brought in a number of new programs, including an Associate Degree in Nursing, an online Master of Science in Nursing and a Master of Science in Medical Sciences. The university also announced SEU Trades, an innovative collection of program offerings in construction technology, HVAC, project management, and in the plumbing and electrical fields.

In addition to the new programs, the university refreshed all existing programs with a new foundational core centered on divine design and vocational calling, Christian worldview formation, and modes of inquiry as tools for real-world problem-solving. Degree revisions also made space for divine design credits that enable students to declare double majors and minors, earn certificates, or engage in experiential learning practicum courses.



## Alumni Relations

**Heidi Hester '23** was one of only a few hundred students to be accepted out of the 12,000 who applied to a 10-week paid internship with the Federal Bureau of Investigation (FBI) Honors Internship Program. Hester was able to jump-start her career in criminal justice by gaining experience on searches, meeting members of the evidence response team, visiting a federal court, and riding in a Black Hawk helicopter.

**Aarushi Pratap '22** is a LINK graduate who uses drawing to process information. During her time at SEU, she crafted an incredible sketchbook filled with sketches of stories from the Bible. Pratap continues to use her artistic abilities to grow her fashion design business. Her debut fashion show took place in Tampa, Florida, and she was selected to participate in Tampa Bay Fashion Week with another fashion show. Pratap has also contributed to advocacy for Inclusive Post Secondary Education (IPSE) by speaking at several events, including conferences in Orlando and Nashville.

**Namiah Simpson '22** is a nursing graduate, 16-time NAIA Track and Field All-American, three-time Academic All-American, and one-time National Champion. She discovered her passion on a

medical mission trip to Uganda, where she found a love for serving others and showing Christ through medicine. Simpson now sees her future nursing career as her mission field. She currently lives in Lakeland, Florida, and works as a Registered Nurse at Lakeland Regional Medical Center.

**Kelsi Dickens '17, '18 (MSK)** is a tennis alumna who successfully defended her PhD dissertation at Troy University in Troy, Alabama. Her dissertation juxtaposed student satisfaction and instruction-related preferences relative to online and campus-based instruction. Dickens is now the faculty coordinator of the sports management program within the Jannetides College of Business, Communication & Leadership at SEU, where she also serves as an assistant coach for the Fire Tennis team.

**Davis Ingle '16, '17 (GMBA)** discovered a passion for politics and government that would change the course of his career after taking an internship in Washington, D.C. This internship would eventually lead him to serve as a press assistant in the White House, where he had the opportunity to travel and work directly alongside former President Donald Trump and his staff.



**Zack '11, '13 (MAML), '14 (MBA)** and **Jenna (Pruitt) Whitt '16** are making a difference in their community and around the world. As pastors in Lake Norman, North Carolina, they live out their faith through their coffee shop, bakery, and through their involvement with CrossFit and several AG missions' organizations.

**Isaac Eisenhauer '09** knew he wanted to go into finance since high school. He is now the founder and a portfolio manager at IvyLine Capital, an investment firm and macro-driven equity fund, and has used his experience in the business world to teach finance students and prepare them for their careers.

**Luke Gambill '98** is a Dove Award-winning musician, an accomplished arranger, conductor, and composer. He currently serves as Professor of Music at Lee University in Nashville, Tennessee, and has supported artists such as Michael W. Smith, Amy Grant, and Bill and Gloria Gaither throughout his career.

**Jim Wellborn '73** has traveled to 71 countries and led thousands of youth on missions trips around the world over his 50-plus years in ministry. He now works in builder relations for Builders International, where he connects churches, volunteers, and organizations to projects worldwide.

## Graduates to Date by College

Ministry & Theology	7,854
Education	4,537
Natural & Health Sciences	899
Social Sciences & Humanities	4,384
Business, Communication & Leadership	5,039
School of Music	602
Steelman Library	10
<b>Total Graduates</b>	<b>23,325</b>





## Accreditation

Southeastern University is accredited by the **Southern Association of Colleges and Schools Commission on Colleges (SACSCOC)** to award Associate's, Baccalaureate, Master's, Education Specialist, and Doctoral Degrees. Southeastern University also may offer credentials such as certificates and diplomas at approved degree levels.

Questions about the accreditation of Southeastern University may be directed in writing to the Southern Association of Colleges and Schools Commission on Colleges at 1866 Southern Lane, Decatur, GA 30033-4097, by calling (404) 679-4500, or by using information available on SACSCOC's website ([www.sacscoc.org](http://www.sacscoc.org)).

## Other discipline-specific accreditations and licensures:

- Accreditation Council for Business Schools and Programs (ACBSP)
- Association for Biblical Higher Education (ABHE)
- Association of Theological Schools (ATS)
- Commission on Collegiate Nursing Education (CCNE)
- Council on Social Work Education (CSWE)
- Florida Department of Education (FLDOE) – *Southeastern University is approved to grant degrees that meet certification requirements for a Florida teaching credential.*





## Institutional Memberships

American Association of Collegiate Registrars  
and Admissions Officers (AACRAO)

American Library Association (ALA)

American Society of Composers, Authors and  
Publishers (ASCAP)

Association For Biblical Higher Education (ABHE)

Association of Christian Schools International (ACSI)

Broadcast Music, Inc. (BMI)

Council for Christian Colleges and Universities (CCCCU)

Council of Independent Colleges (CIC)

Council on Higher Education Accreditation (CHEA)

Florida Association of Colleges for Teacher  
Education (FACTE)

Florida League of Christian Schools (FLOCS)

Hispanic Association of Colleges and Universities (HACU)

Independent Colleges and Universities of Florida (ICUF)

National Association of Independent Colleges and  
Universities (NAICU)

National Association of Intercollegiate Athletes (NAIA)

National Collegiate Honors Council (NCHC)

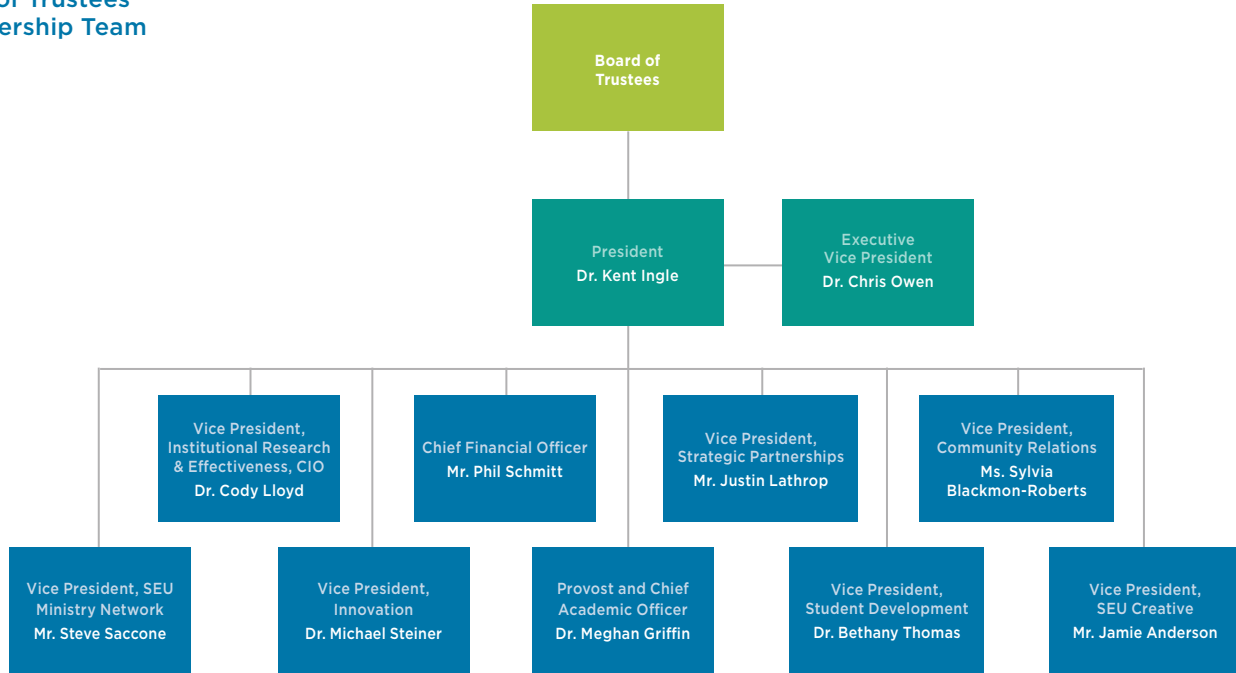
Polk Arts Alliance

The Alliance for Assemblies of God Higher Education

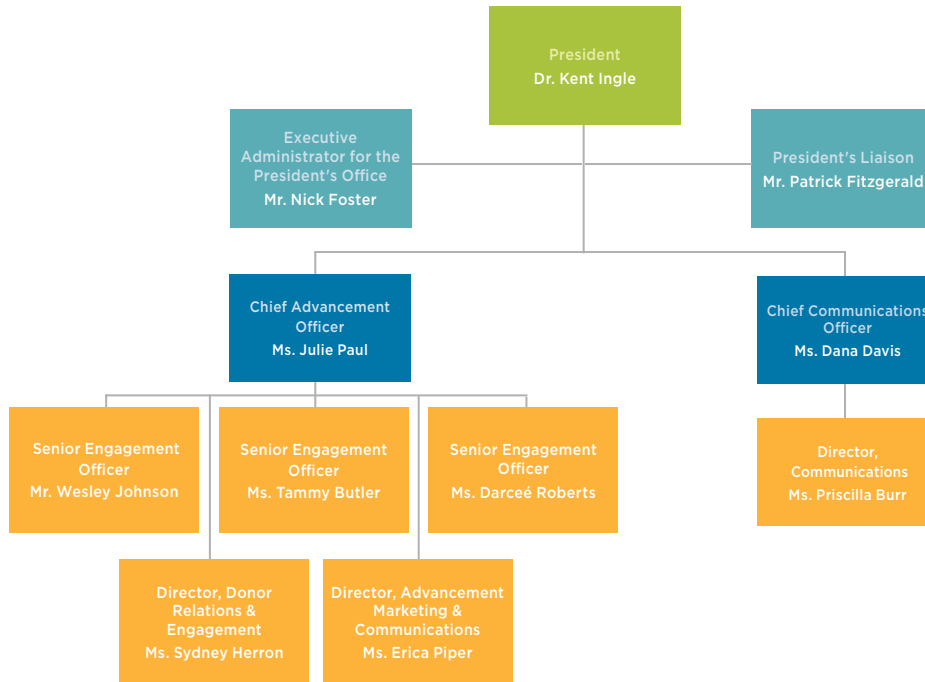


# Organizational Charts

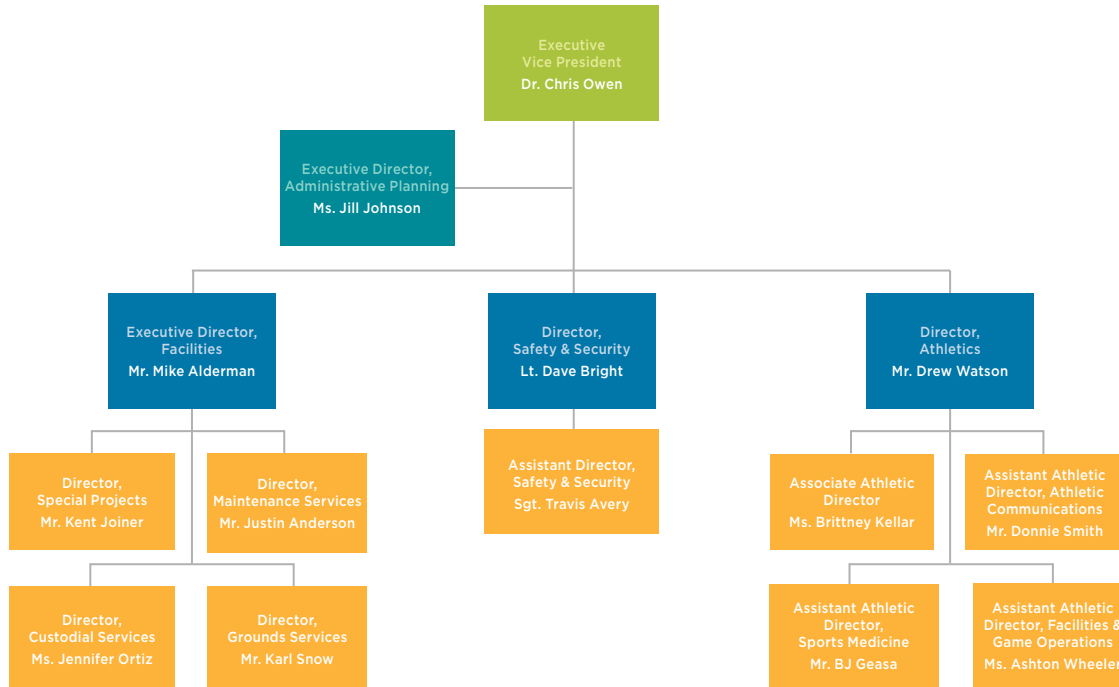
## Board of Trustees & Leadership Team



## Office of the President

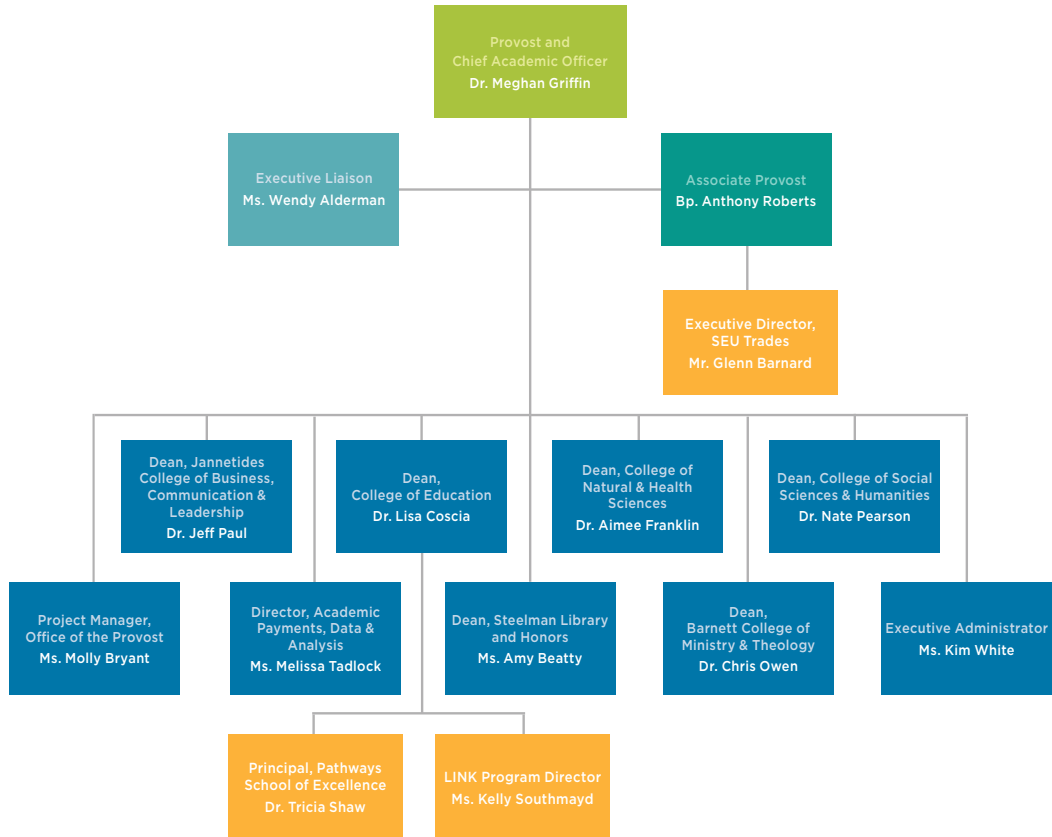


## Executive Vice President

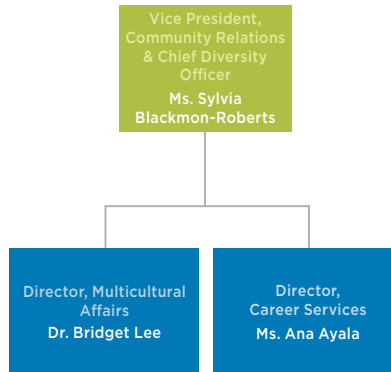




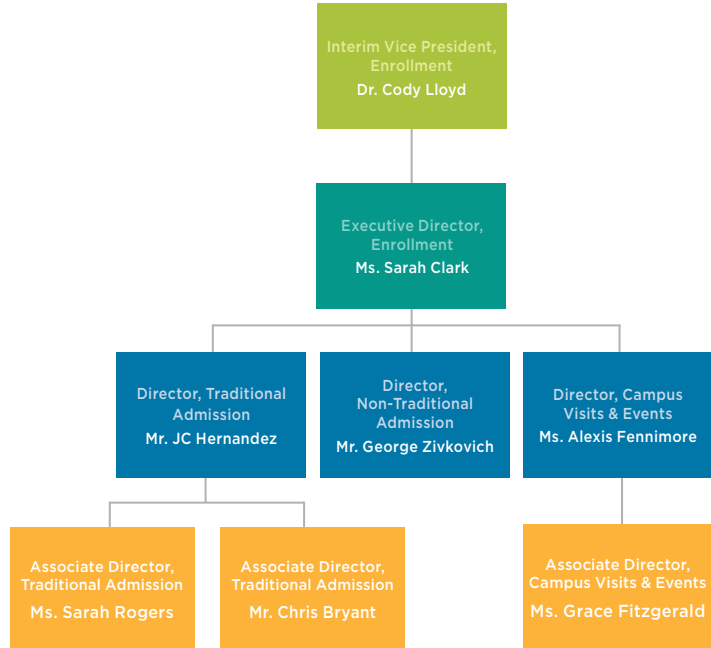
# Provost



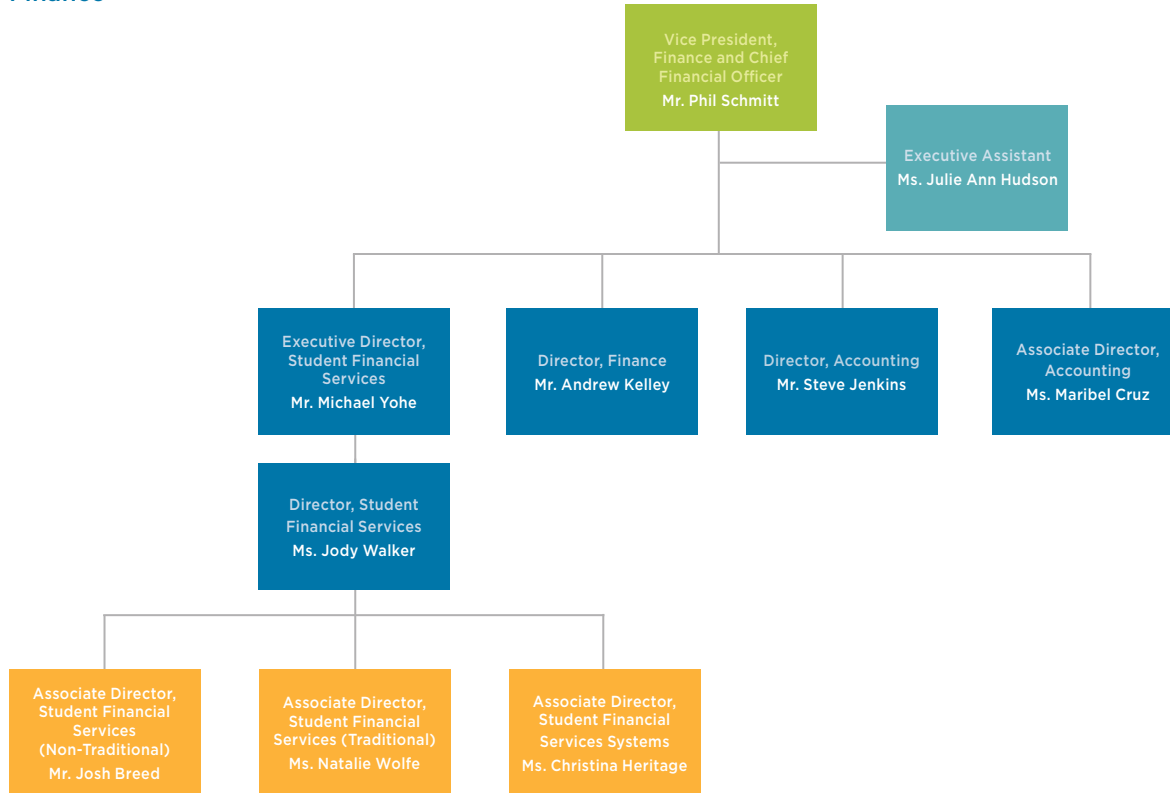
## Community Relations



## Enrollment

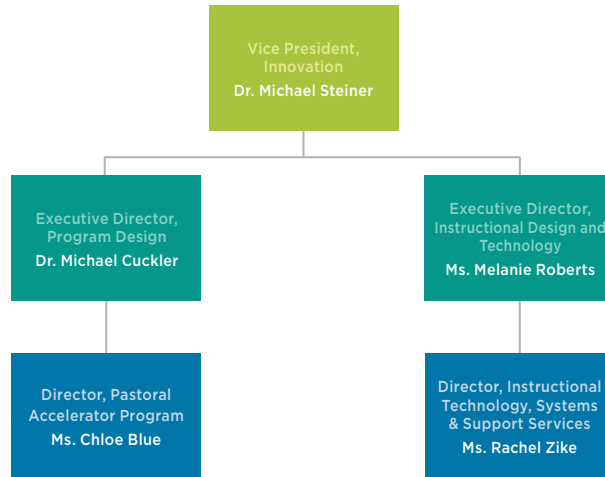


# Finance

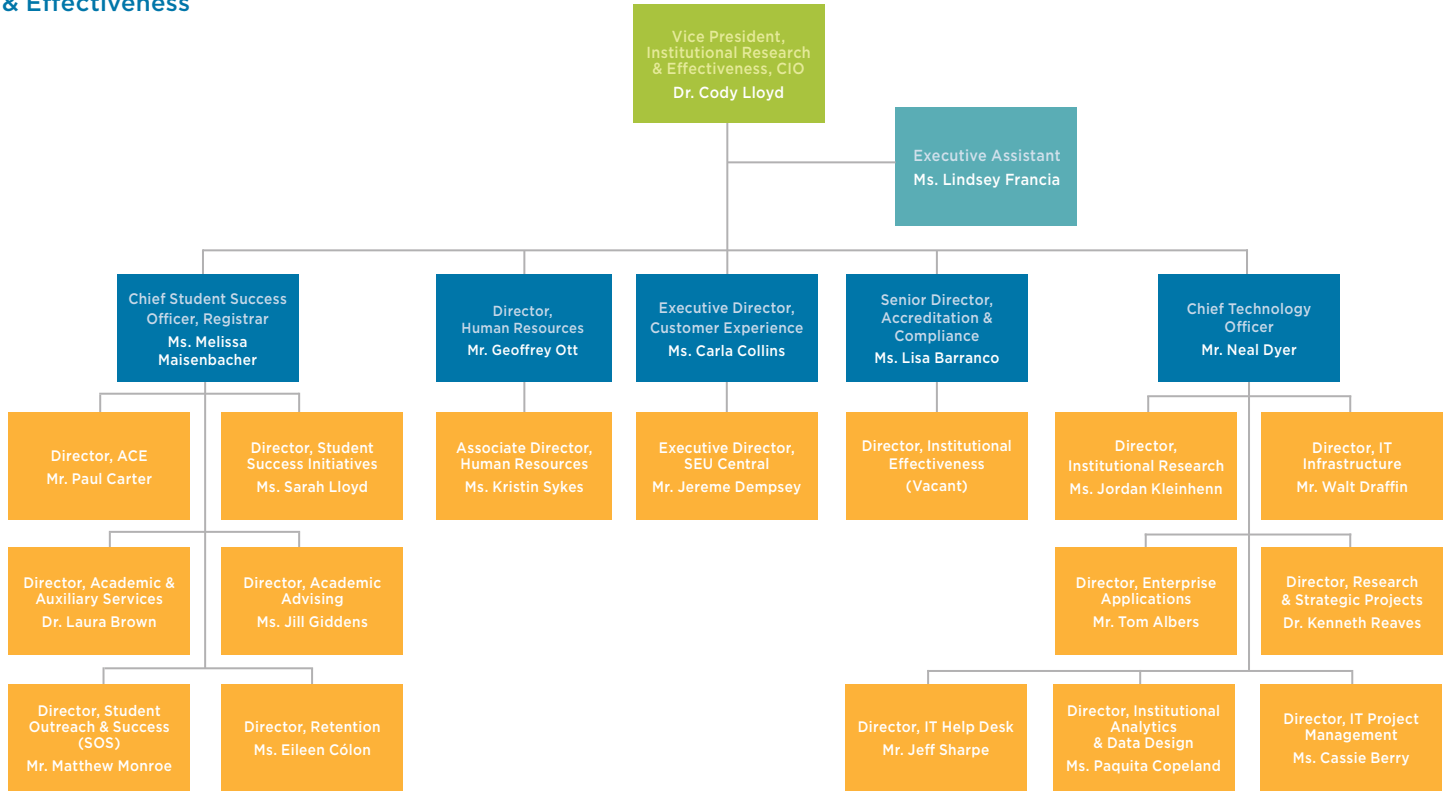




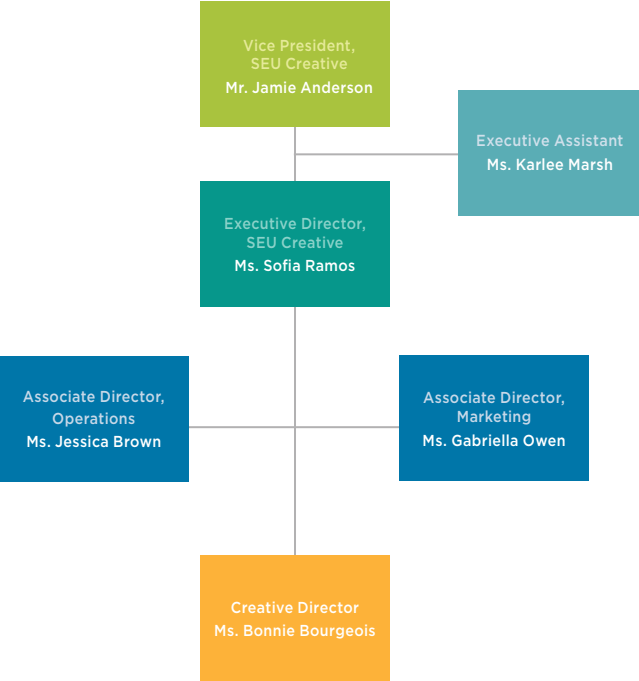
## Innovation



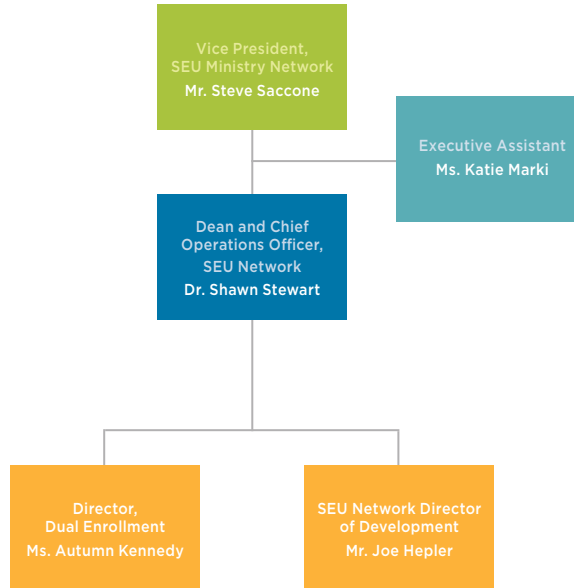
## Institutional Research & Effectiveness



SEU Creative

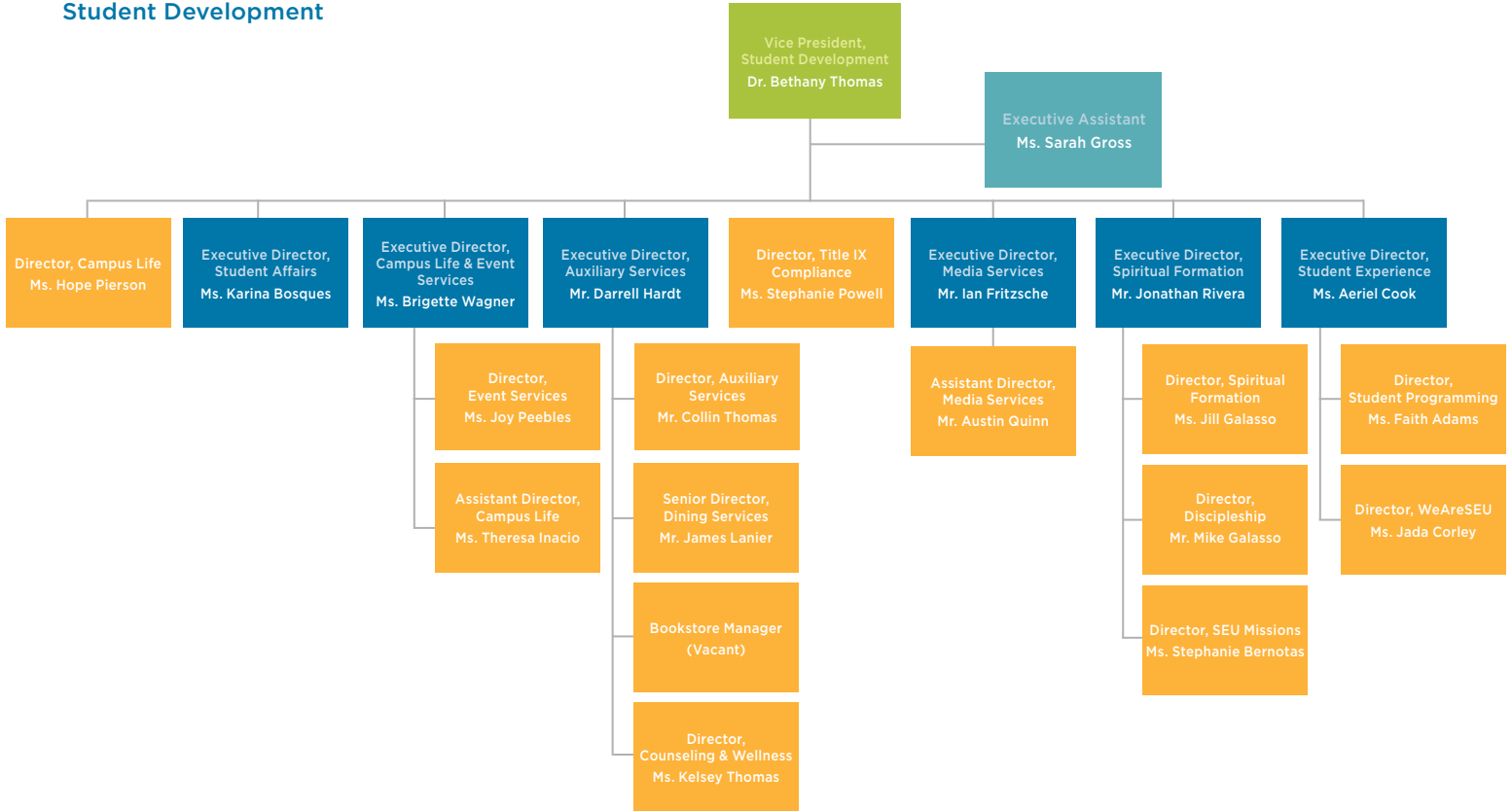


## SEU Ministry Network





# Student Development



## Athletics

Southeastern University is a member of the National Association of Intercollegiate Athletics (NAIA) and competes in The Sun Conference and the Appalachian Athletic Conference.

### Varsity Sports

#### Men's Programs

Baseball  
Basketball  
Bass Fishing  
Cross Country  
Football  
Golf  
Soccer  
Tennis  
Track and Field  
Wrestling

#### Women's Programs

Basketball  
Beach Volleyball  
Cross Country  
Golf  
Soccer  
Softball  
Tennis  
Track and Field  
Volleyball

### Intramural Sports

Basketball  
Flag Football  
Indoor Soccer  
Powder Puff Football  
Sand Volleyball  
Soccer  
Softball  
Ultimate Frisbee

#### Coed Programs

Cheerleading  
eSports



## Athletic News

The championships continued to pour in for Southeastern University during the 2022-23 athletic season.

Southeastern finished fifth in the NAIA Learfield Directors' Cup with the top spring score of 456.75 points, with 251 coming from third place national finishes by women's tennis, outdoor men's track and field, and baseball. All eight spring sports participated in their national championships.

The indoor men's track and field 4x400 Relay team consisting of Davien Worrels, Keishon Franklin, James Turner, and Joseph Taylor claimed the program's first team NAIA National Championship. Taylor was also crowned the 400 Meter national champion. During the outdoor season, Franklin became the program's second NAIA national champion with his first-place 400 Meter finish and time of 46.57. On the women's side, Julia Rohm became a national champion in the 10,000 Meters after a career-best time of 35:53.10 and was runner-up in the 5,000 Meters.

Fire baseball finished third nationally after a 58-6 overall record and 19-2 Sun Conference record. Southeastern went 5-1 and earned their fifth Sun Conference Tournament Championship title. In Lewiston, the Fire defeated No. 9 Lewis-Clark State 5-2 in a 2022 World Series final rematch before falling 13-4 to No. 4 William Carey. The Fire then defeated No. 8 Indiana Wesleyan and No. 3 Westmont before falling to Westmont 6-4 in the semifinals.

The Fire women's tennis team had their best finish in program history, advancing to the NAIA National Tournament Semifinal after defeating No. 11 University of the Cumberlands 4-1 and upsetting quarterfinalist No. 3 Xavier University 4-2 before falling to the eventual national champions, Georgia Gwinnett.

The men's tennis team advanced to the NAIA National Tournament and defeated Oakland City University 4-0 before falling to quarterfinalist No. 4 Tennessee Wesleyan University 4-2.

Sal Silva won the 157-pound title and became the fourth NAIA National Champion in Fire wrestling history. Silva began the tournament ranked fifth nationally but defeated the top-seeded semifinalist and the three-seed finalist in a sudden 3-1 win. Coleman Bryant also had a Cinderella run, taking second in the 184-pound weight class after entering the tournament ranked 14th.

Men's basketball had their best finish since 2014, claiming the regular season and Sun Conference tournament titles and advancing to the 16th round of the NAIA National Tournament after two upset wins over the Top 10 teams during the Montgomery Bracket's first round.

Women's soccer won an at-large bid and hosted an NAIA National Tournament first and second round. They concluded the season with a 14-4-2 overall record.

Men's golf had their first Sun Conference champion in 10 years with Matthew Soucinek finishing the tournament three-over. Soucinek also qualified for the US Amateur for the second time in his career.

Collectively, the Fire claimed eight Sun Conference Championships, 172 All-Conference selections, 53 NAIA All-Americans, 85 Academic All-Districts, and seven Sun Conference Champions of Character.





## Clubs & Organizations

ACS

Alpha Chi

Authentic Authors

Campus Outreach

Christian Veterinary Fellowship

CKI

COMM Club

Creative Circle Art and Design Club

Delight Ministries

Herodotus Society

Hospitality for the Homeless

Jiu-Jitsu

Kappa Delta Pi

Kappa Mu Epsilon National Mathematics  
Honor Society

NafME

National Student Speech Language

Hearing Association

NSSLHA

PR Club

Pre-Dental Waxing Club

Pre-Health Service Organization (PHSO)

Pre-Physical/Occupational

Therapy Association

Psi Chi International Honor Society

Psychology Mind Matters Club

SEU Aviators

SEU Debate

SEU Mock Trial

Skarf Club

Social Advocacy Club

Society for Environmental Stewardship

Soul Food

Student Christian Medical and Dental  
Association

Student Theology Club

Students for Life

Turning Point USA

Unpland Improv



## Library & Computer Resources

### Library provides access to:

Books (Print)	79,510
Videos	4,973
eBooks	294,139
Online Videos	143
eNewspapers	329
Other	4,067
<b>Total</b>	<b>383,161</b>

### Computers

Total computers available to students	84
---------------------------------------	----



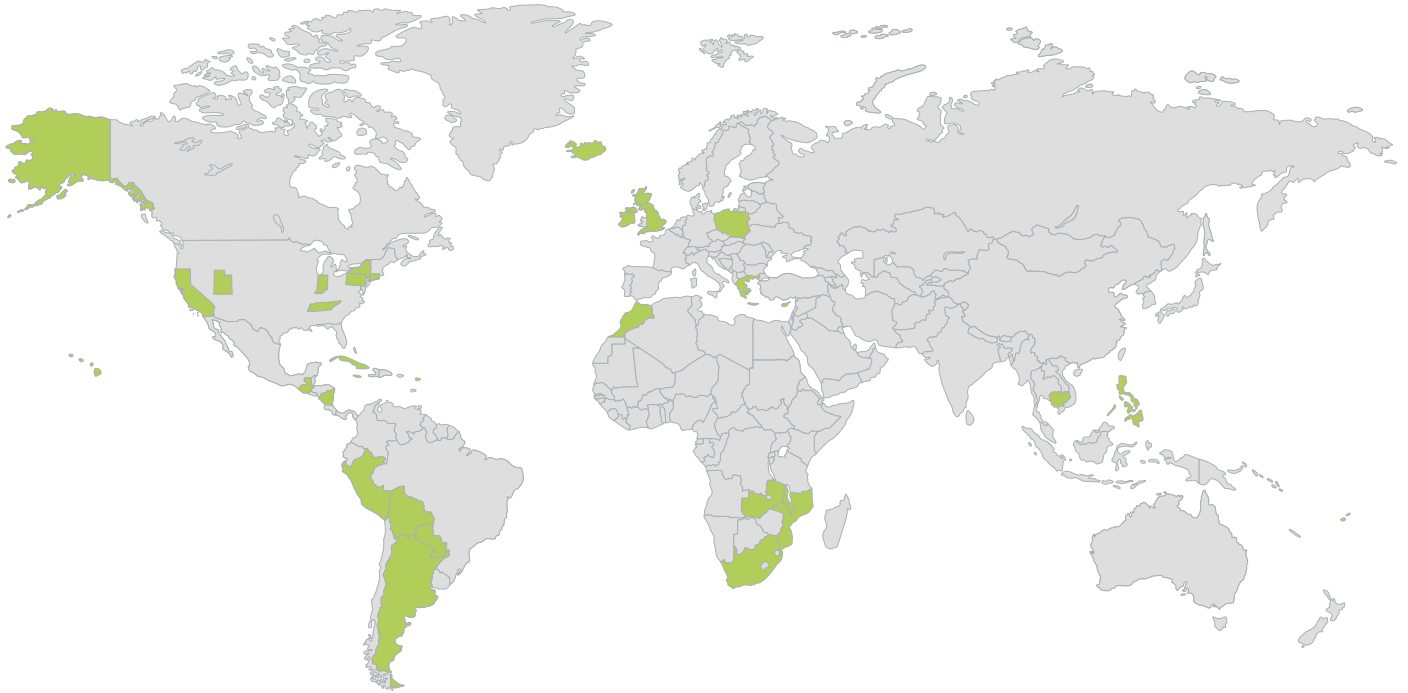


## Missions

During the 2022-2023 academic year, SEU Missions, Southeastern's missions department, sent 450 students on 39 trips both here in the United States and all around the world.

Alaska	Iceland	Peru
Argentina	Indiana	Philippines
Bolivia	Jamaica	Poland
California	Malawi	Republic of Ireland
Cambodia	Middle East	Saint Croix
Connecticut	Morocco	Scotland
Cuba	Mozambique	Silk Road
England	New York	South Africa
Fiji	Nicaragua	South Asia
Greece	North Ireland	Tennessee
Guatemala	Paraguay	Utah
Hawaii	Pennsylvania	Zambia





## Undergraduate Tuition & Fees, 2023-2024

Tuition	Semester	Year
12-17 Credit Hours	\$15,216	\$30,432
Hourly Tuition (under 12 or over 17 credit hours)	\$1,268	\$2,536
General Student Fee	\$650	\$1,300
<b>Total for Off-Campus</b>	<b>\$15,866</b>	<b>\$31,732</b>

### Residence Halls

Traditional Student Housing	\$2,800	\$5,600
Traditional Student Housing (private room)	\$3,200	\$6,400





Meal Plans	Semester	Year
21-Meals-per-Week Plan (includes \$200 in Fire Funds)	\$2,710	\$5,420
14-Meals-per-Week Plan (includes \$250 in Fire Funds)	\$2,590	\$5,180
10-Meals-per-Week Plan (includes \$275 in Fire Funds)	\$2,410	\$4,820
<b>Commuter Meal Plans</b>		
25-Meals-per-Semester Plan (includes \$250 in Fire Funds)	\$525	\$1,050
15-Meals-per-Semester Plan (includes \$150 in Fire Funds)	\$315	\$630
10-Meals-per-Semester Plan (includes \$125 in Fire Funds)	\$240	\$480
<b>Room and Meal Plan*</b>	<b>\$5,510</b>	<b>\$11,020</b>
<b>Total for On-Campus*</b>	<b>\$21,376</b>	<b>\$42,752</b>

\*Based on 12-17 credit hours; traditional student housing and 21-meal plan

### Other Estimated On-Campus Expenses

Books and Supplies	\$1,600
Miscellaneous (laundry, entertainment, etc.)	\$6,000
Transportation	\$1,800



## Graduate Tuition & Fees, 2023-2024

Program	Tuition/Hr	Credit Hours	Total Tuition
Doctor of Education (EdD)	\$500	54	\$27,000
Doctor of Ministry (DMin)	\$500	36	\$18,000
Doctor of Strategic Leadership (DSL)	\$795	60	\$47,700
MA in the Art of Design Management	\$525	36	\$18,900
MA in Biblical Studies	\$495	48	\$23,760
MA in Human Services	\$495	36	\$17,820
MA in International Community Development	\$495	36	\$17,820
MA in Leadership	\$495	36	\$17,820
MA in Ministerial Leadership	\$495	36	\$17,820
MA in Ministerial Leadership – Executive Track	\$525	36	\$18,900
MA in Theological Studies	\$495	36	\$17,820
Master of Business Administration (MBA)	\$525	36	\$18,900
MBA (Global Program)	N/A	36	\$27,000
Master of Divinity (MDiv)	\$495	72	\$35,640

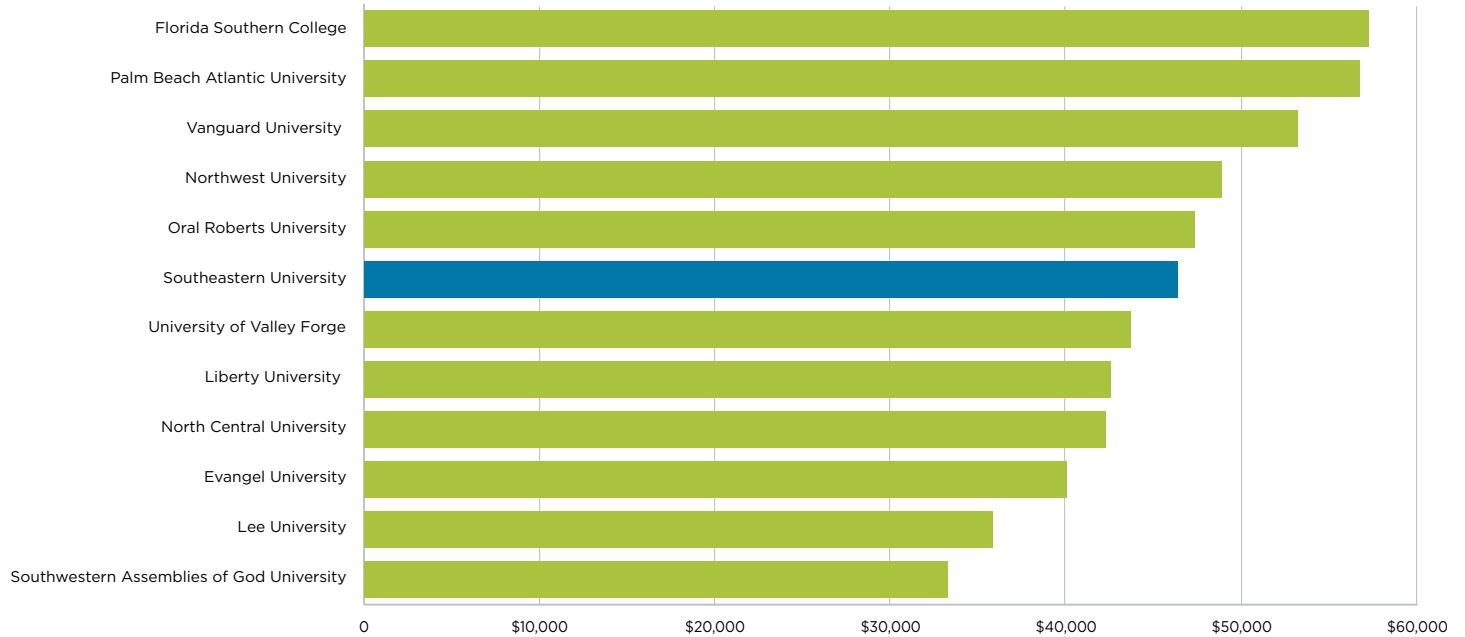


Program	Tuition/Hr	Credit Hours	Total Tuition
MEd in Elementary Education	\$375	33	\$12,375
MEd - All Other Programs	\$375	36	\$13,500
MS in Kinesiology	\$450	33	\$14,850
MS in Medical Sciences	\$675	42	\$28,350
MS in Nursing	\$595	32	\$19,040
MS in Pastoral Care & Counseling	\$495	36	\$17,820
MS in Professional Counseling	\$525	60	\$31,500
Master of Social Work (MSW)	\$515	65	\$33,475
PhD in Organizational Leadership	\$795	60	\$47,700
Annual General Student Services Fee	\$350		
Doctoral Education Fee	\$200 per semester		



## Tuition, Room & Board Comparison, 2022-2023

School	Assemblies of God	Annual Cost
Florida Southern College		\$57,200
Palm Beach Atlantic University		\$56,695
Vanguard University	(AG)	\$53,150
Northwest University	(AG)	\$48,848
Oral Roberts University		\$47,316
<b>Southeastern University</b>	<b>(AG)</b>	<b>\$46,308</b>
University of Valley Forge	(AG)	\$43,660
Liberty University		\$42,498
North Central University	(AG)	\$42,215
Evangel University	(AG)	\$40,032
Lee University		\$35,800
Southwestern Assemblies of God University	(AG)	\$33,242



## Financial Aid for New Traditional Undergraduate Students

	2017	2018	2019	2020	2021	2022	2023
Federal Grant Recipients	85%	82%	76%	78%	84%	90%	86%
Federal Grant Average	\$14,882	\$13,774	\$15,134	\$12,421	\$11,197	\$11,431	\$12,433
State/Local Grant Recipients	59%	64%	63%	59%	56%	55%	57%
State/Local Grant Average	\$4,299	\$4,666	\$4,271	\$4,327	\$4,187	\$3,406	\$4,694
Institutional Grant Recipients	98%	99%	99%	100%	100%	100%	100%
Institutional Grant Average	\$12,015	\$13,070	\$14,280	\$14,701	\$16,109	\$17,474	\$17,319
Student Loan Recipients	82%	78%	70%	73%	82%	88%	84%
Student Loan Average	\$14,000	\$12,587	\$14,018	\$11,635	\$11,008	\$11,280	\$11,331
<b>Financial Aid Recipients</b>	<b>100%</b>	<b>100%</b>	<b>100%</b>	<b>100%</b>	<b>100%</b>	<b>100%</b>	<b>100%</b>



## Financial Aid for All Other New Undergraduate Students

	2017	2018	2019	2020	2021	2022	2023
Federal Grant Recipients	80%	79%	82%	83%	78%	81%	80%
Federal Grant Average	\$10,986	\$10,907	\$9,351	\$9,142	\$9,061	\$10,335	\$10,088
State/Local Grant Recipients	23%	26%	24%	25%	29%	25%	31%
State/Local Grant Average	\$3,320	\$3,586	\$2,998	\$3,131	\$2,986	\$2,383	\$3,681
Institutional Grant Recipients	67%	73%	73%	73%	74%	17%*	59%*
Institutional Grant Average	\$1,704	\$1,779	\$1,781	\$1,849	\$2,255	\$2,179	\$2,612
Student Loan Recipients	75%	74%	77%	80%	71%	80%	72%
Student Loan Average	\$9,282	\$8,990	\$7,531	\$7,260	\$7,350	\$7,705	\$7,394
<b>Financial Aid Recipients</b>	<b>94%</b>	<b>95%</b>	<b>96%</b>	<b>95%</b>	<b>94%</b>	<b>87%</b>	<b>88%</b>

\*Starting in 2022, practicum changed from being awarded as aid to being processed as a reduced bill amount.





## Academic Programs

### Barnett College of Ministry & Theology

#### *Ministry & Theology*

##### ASSOCIATE

Ministerial Leadership

##### BACHELOR'S

BA Ministerial & Theological Studies

BA Multidisciplinary Studies

BS Ministerial Leadership with Concentration

##### CERTIFICATE - UNDERGRAD

Orange Family Ministry

Practical Ministries

#### *School of Divinity*

##### MASTER'S

MA Biblical Studies

MA Master of Theology

MA Ministerial Leadership with Concentration

MA Theological Studies

Master of Divinity (MDiv)

##### DOCTORATE

Doctor of Ministry (DMin)

##### CERTIFICATE - GRADUATE

Practical Ministries

### *The Bob & Hazel Hoskins School of Mission*

##### BACHELOR'S

BS Ministerial Leadership: Missional Leadership

##### MASTER'S

MA Global Ministry Design

MA International Family Ministry

##### DOCTORATE

Doctor of Missiology (DMiss)

##### CERTIFICATE - GRADUATE

Global Ministry Design

International Family Ministry

### College of Education

#### *Educator Preparation & Leadership, Undergrad*

##### BACHELOR'S

BS Early Childhood Education

BS Elementary Education

BS Global Education

BS Secondary Biology

BS Secondary English

BS Secondary Mathematics

BS Secondary Social Sciences

BS/MEd Exceptional Student Education



CERTIFICATE - UNDERGRAD

- Adaptive Physical Education
- Serving Individuals with Disabilities

*Educator Preparation & Leadership, Graduate*

MASTER'S

- MEd Educational Leadership
- MEd Educational Therapy
- MEd Elementary Education
- MEd Exceptional Student Education
- MEd Literacy Education
- MEd Teaching English to Speakers of Other Languages

DOCTORATE

- EdD Curriculum & Instruction
- EdD Organizational Leadership

CERTIFICATE - GRADUATE

- Dyslexia Education

*LINK*

CERTIFICATE - UNDERGRAD

- Comprehensive Post Secondary Transition

**College of Natural & Health Sciences**

*Kinesiology*

BACHELOR'S

- BS Kinesiology with Concentration

MASTER'S

- MS Kinesiology

*Mathematics*

BACHELOR'S

- BS Mathematics
- BS Mathematics: Actuarial

*Medical Sciences*

MASTER'S

- MS Medical Sciences

*Natural Sciences*

BACHELOR'S

- BS Biochemistry
- BS Biology with Concentration
- BS Communication Sciences & Disorders
- BS General Biology
- BS Health Science & Business

*Nursing*

ASSOCIATE

- AD Nursing

BACHELOR'S

- BS Nursing

MASTER'S

- MS Nursing



## College of Social Sciences & Humanities

### *Counseling, Psychology & Human Services*

#### BACHELOR'S

- BA Humanitarian Compassion
- BS Human Services
- BS Interdisciplinary Studies
- BS Psychology

#### MASTER'S

- MA Human Services
- MA International Community Development
- MS Pastoral Care & Counseling
- MS Professional Counseling

#### CERTIFICATE - UNDERGRAD

- Advocacy in Global Contexts
- Biblical Disaster Response
- Global Perspectives of Relief
- Political Leadership
- Racial Reconciliation

#### CERTIFICATE - GRADUATE

- Human Services Administration
- Human Services Children & Family

### *Humanities & Foundational Core*

#### ASSOCIATE

- AA General Education

#### BACHELOR'S

- BA Historical & Literary Studies
- BA/BS General Studies
- BFA Creative Writing
- BS Political Science

#### CERTIFICATE - UNDERGRAD

- Teaching English to Speakers of Other Languages

### *Social Work & Criminal Justice*

#### BACHELOR'S

- BS Criminal Justice
- BS Criminal Justice & Legal Studies
- BS Criminal Justice & Organizational Leadership
- BS Social Work & Criminal Justice
- Bachelor of Social Work (BSW)

#### MASTER'S

- Master of Social Work (MSW)

#### CERTIFICATE - UNDERGRAD

- Child Welfare

## Jannetides College of Business, Communication & Leadership

### *Business*

#### BACHELOR'S

- Bachelor of Business Administration (BBA)
- BS Accounting



BS Business & Professional Leadership  
BS Business Studies  
BS Finance  
BS International Business  
BS Legal Studies  
BS Management  
BS Marketing

### *Communication, Art & Design*

#### BACHELOR'S

BA Visual Arts  
BA/BS Communication with Concentration  
BA/BS Film Production  
BA/BS Graphic Design  
BS Communication & Mass Media  
BS Digital Design & Production with Concentration  
BS Digital Media & Design with Concentration

#### MASTER'S

MA Art of Design Management

### *Graduate Studies*

#### MASTER'S

Master of Business Administration (MBA)

#### DOCTORATE

Doctor of Strategic Leadership (DSL)  
PhD Organizational Leadership

### *Professional Studies*

#### ASSOCIATE

AAS Professional Pilot

#### BACHELOR'S

BS Aviation Management: Professional Pilot  
BS Business & Professional Leadership: Professional Pilot  
BS Organizational Leadership  
BS Sport Management with Concentration  
BS Tourism & Hospitality Management

#### CERTIFICATE - UNDERGRAD

Back-End Development  
Cybersecurity  
Data Science  
Front-End Development  
Organizational Leadership

#### CERTIFICATE - GRADUATE

Leadership: Entrepreneurship  
Leadership: Non-Profit  
Organizational Leadership



## School of Music

### *Music*

#### BACHELOR'S

- BA Music
- Bachelor of Music Education (BME)
- BS Commercial Music
- BS Worship Studies

#### CERTIFICATE - UNDERGRAD

- Instrumental Performance
- Piano Performance
- Vocal Performance

## Steelman Library

#### BACHELOR'S

- BA Humanities with Concentration

### *Classical Studies*

#### ASSOCIATE

- AA General Studies

#### MASTER'S

- MA Classical Studies with Concentration



## Dual Enrollment

### Statistics

**44** High Schools    **2,892** Students

## SEU Network

### Statistics

**145** Sites                    **29** Regional Campuses and High-Impact Sites

**44** States                    **1,875** Undergraduates    **352** Graduates    **1,533** Non-Degree

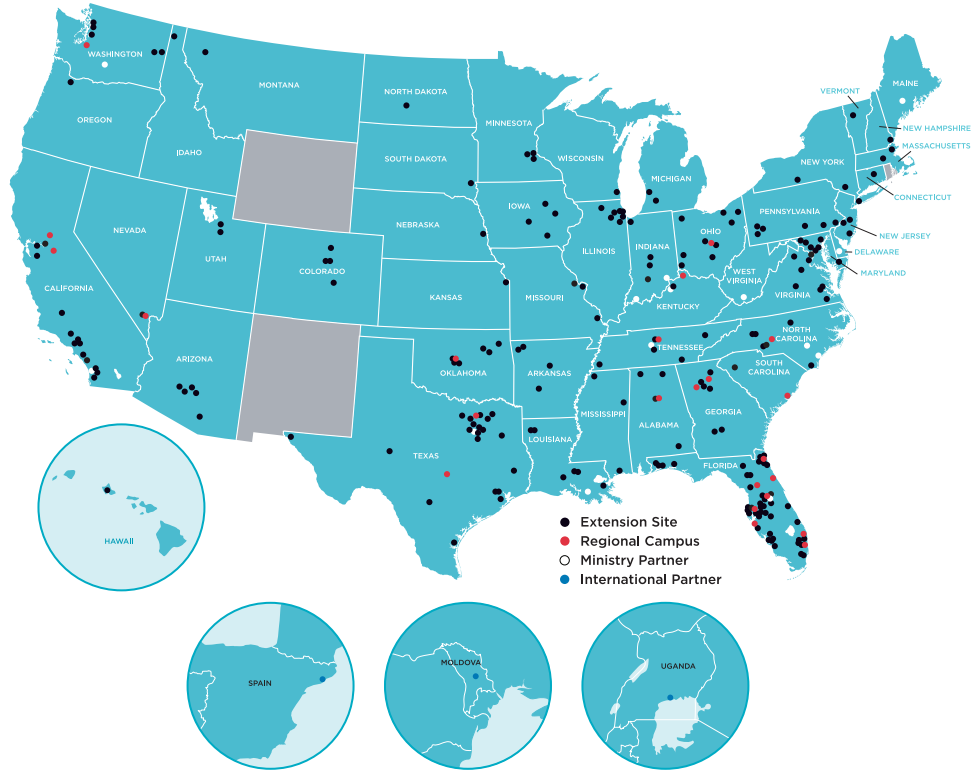
### High Impact Sites/Partnerships

7 Hills Church, Florence, KY  
Bayside Community Church, Bradenton, FL  
Calvary Christian Center, Ormond Beach, FL  
Celebration Church, Georgetown, TX  
Celebration Church, Jacksonville, FL  
Central Christian Church, Henderson, NV  
Christ Fellowship, Palm Beach Gardens, FL  
Christian Life Center, Fort Lauderdale, FL  
Classical Conversations Plus, Southern Pines, NC  
Dream City Church, Phoenix, AZ  
EDiGlobal, Arlington, TX  
Faith Assembly of God, Orlando, FL  
Free Chapel, Gainesville, GA

Highlands College, Birmingham, AL  
Hope Fellowship, Frisco, TX  
Meadowbrook Church, Ocala, FL  
Motion Church, Puyallup, WA  
Multiply Church, Concord, NC  
New Life Church, Conway, AR  
Ohio Network Campus, Columbus, OH  
Seacoast Church, Mount Pleasant, SC  
The Belonging Co, Franklin, TN  
The Church at Chapelhill, Douglasville, GA  
The Gate Church, Oklahoma City, OK  
The House Modesto, Modesto, CA  
Thriving Churches Int'l, Roseville, CA  
Valley Creek Church, Flower Mound, TX  
Vous Church, Miami, FL



# OUR PARTNERS





## School of Honors

### Semester GPA

2016		2017		2018		2019		2020		2021		2022	
Spring	Fall	Spring	Fall	Spring	Fall	Spring	Fall	Spring	Fall	Spring	Fall	Spring	Fall
3.85	3.74	3.77	3.82	3.82	3.81	3.79	3.79	3.81	3.84	3.82	3.81	3.80	3.82





### Yearly GPA

2016-2017	2017-2018	2018-2019	2019-2020	2020-2021	2021-2022	2022-2023
3.76	3.82	3.80	3.80	3.83	3.80	3.70

### Entrance Enrollment

2016-2017	2017-2018	2018-2019	2019-2020	2020-2021	2021-2022	2022-2023
68	63	72	71	70	72	76

### Total Enrollment

2016	2017	2018	2019	2020	2021	2022	2023
183	195	207	217	204	214	232	237

### Scholarships

Started at \$2,000 per year

Currently at \$3,000 per year

**Program Graduation Rate:** 53%

**Graduates of the School of Honors have been accepted into numerous graduate schools:**

Harvard University, George Washington University, Wake Forest University, West Virginia School of Osteopathic Medicine, University of Louisville School of Medicine, Virginia Polytechnic State University, Baylor University, Missouri State University, Indiana University, Oklahoma State University, Boston University, Brandeis University, University of South Florida, Florida State University, Lake Erie College of Osteopathic Medicine, Brenau University, Southeastern University, Gordon-Cornwell Theological Seminary, Liberty University College of Osteopathic Medicine, Cornell School of Law, Candler School of Theology at Emory University, and University of Florida Law School.







## 2023 Fall Enrollment Summary by Delivery

Undergraduate	New	Returning	Total	Full-Time	Part-Time
SEU Lakeland	795	1,419	2,214	2,152	62
SEU Online	376	345	721	437	284
SEU Sites	841	1,084	1,925	1,550	375
SEU Partnerships	1,046	434	1,480	119	1,361
Florida High School Dual Enrolled	2,331	561	2,892	19	2,873
<b>Total New Freshmen</b>	<b>1,034</b>	<b>0</b>	<b>1,034</b>	<b>944</b>	<b>90</b>
<b>Total Undergraduates</b>	<b>5,389</b>	<b>3,843</b>	<b>9,232</b>	<b>4,277</b>	<b>4,955</b>



<b>Master's</b>	<b>New</b>	<b>Returning</b>	<b>Total</b>	<b>Full-Time</b>	<b>Part-Time</b>
CERTG Human Services	4	1	5	0	5
CERTG Leadership: Entrepreneurship	2	1	3	1	2
CERTG Leadership: Non-Profit	2	0	2	0	2
CERTG Mental Health Services	3	0	3	1	2
CERTG Organizational Leadership	2	2	4	0	4
MA Art of Design Management	1	12	13	9	4
MA Biblical Studies	16	20	36	9	27
MA Classical Studies	45	51	96	0	96
MA Family Ministry	0	6	6	1	5
MA Global Ministry Design	5	18	23	0	23
MA Human Services	5	11	16	4	12
MA International Community Development	5	4	9	3	6
MA International Family Ministry	0	4	4	1	3
MA Leadership	19	45	64	27	37
MA Ministerial Leadership	48	60	108	41	67
MA Theological Studies	8	24	32	11	21
Master of Business Administration (MBA)	66	100	166	95	71
Master of Divinity (MDiv)	43	56	99	39	60
MDiv Ministerial Leadership	5	3	8	4	4
MEd Educational Leadership	6	34	40	4	36
MEd Educational Therapy	5	11	16	0	16
MEd Elementary Education	4	7	11	2	9
MEd Exceptional Student Education	5	14	19	3	16
MEd Literacy Education	0	10	10	1	9
MEd Teaching English to Speakers of Other Languages	0	8	8	0	8
MS Kinesiology	19	16	35	16	19
MS Nursing	2	6	8	1	7
MS Pastoral Ministry	8	21	29	13	16
MS Professional Counseling	64	40	104	91	13
Master of Social Work (MSW)	33	18	51	50	1
ND Non-Degree Seeking	3	1	4	1	3





<b>Doctoral</b>	<b>New</b>	<b>Returning</b>	<b>Total</b>	<b>Full-Time</b>	<b>Part-Time</b>
Doctor of Ministry (DMin)	20	31	51	27	24
Doctor of Missiology (DMiss)	12	20	32	1	31
Doctor of Strategic Leadership (DSL)	8	23	31	30	1
Edd Education	0	100	100	40	60
PhD Organizational Leadership	10	46	56	21	35
<b>Total Graduates</b>	<b>478</b>	<b>824</b>	<b>1,302</b>	<b>547</b>	<b>755</b>
<b>Total University Enrollment</b>	<b>5,867</b>	<b>4,667</b>	<b>10,534</b>	<b>4,824</b>	<b>5,710</b>





## Enrollment by Major

### Barnett College of Ministry & Theology

#### *Ministry & Theology*

##### ASSOCIATE

Christian Ministry.....	29
Ministerial Leadership.....	180
Worship Ministries.....	2

##### BACHELOR'S

BA Multidisciplinary Studies.....	40
BA/BS Biblical Studies.....	7
BA/BS Worship Ministries.....	4
BS Children, Youth & Family Ministries.....	4
BS Christian Ministry.....	17
BS Ministerial Leadership.....	1,090
BS Ministry: Biblical Studies.....	11
BS Ministry: Children Youth & Family.....	14

BS Ministry: Pastoral Ministry.....	21
BS Practical Ministries.....	3
BS Worship Ministries.....	6

##### NON-DEGREE - UNDERGRAD

The Academy.....	9
------------------	---

##### CERTIFICATE - UNDERGRAD

Practical Ministries.....	1
---------------------------	---

#### *School of Divinity*

##### MASTER'S

MA Biblical Studies.....	36
MA Family Ministry.....	6
MA Ministerial Leadership.....	108
MA Theological Studies.....	32
Master of Divinity (MDiv).....	99
MDiv Ministerial Leadership.....	8



DOCTORATE	
Doctor of Ministry (DMin).....	51

***Bob & Hazel Hoskins School of Mission***

BACHELOR'S	
BA Intercultural Studies.....	1
BS Ministerial Leadership.....	34

MASTER'S	
MA Global Ministry Design.....	23
MA International Family Ministry.....	4

DOCTORATE	
Doctor of Missiology (DMiss).....	32

**College of Education**

***Educator Preparation & Leadership, Undergrad***

BACHELOR'S	
BS Early Childhood Education.....	20
BS Elementary Education.....	82
BS Global Education Studies.....	48
BS Secondary Education.....	42
BS/MEd Exceptional Student Education.....	23

CERTIFICATE - UNDERGRAD	
Serving Individuals with Disabilities.....	1

***Educator Preparation & Leadership, Graduate***

MASTER'S	
BS/MEd Exceptional Student Education.....	1
MEd Educational Leadership.....	40
MEd Educational Therapy.....	16
MEd Elementary Education.....	11
MEd Exceptional Student Education.....	18
MEd Literacy Education.....	10
MEd Teaching English to Speakers of Other Languages.....	8

DOCTORATE	
EdD Curriculum & Instruction.....	39
EdD Organizational Leadership.....	61

***LINK***

CERTIFICATE - UNDERGRAD	
Comprehensive Post Secondary Transition.....	10

**College of Natural & Health Sciences**

***Kinesiology***

BACHELOR'S	
BS Kinesiology.....	167

MASTER'S	
MS Kinesiology.....	35



### **Mathematics**

#### BACHELOR'S

BS Mathematics..... 17

### **Natural Sciences**

#### BACHELOR'S

BS Biochemistry..... 9

BS Biology..... 127

BS Communication Sciences & Disorders..... 26

BS General Biology..... 9

BS Health Science & Business..... 6

### **Nursing**

#### ASSOCIATE

AS Nursing..... 5

#### BACHELOR'S

BS Nursing..... 185

#### MASTER'S

MS Nursing..... 8

## **College of Social Sciences & Humanities**

### **Counseling, Psychology & Human Services**

#### BACHELOR'S

BA Humanitarian Compassion..... 9

BS Human Services..... 35

BS Interdisciplinary Studies..... 14

BS Psychology..... 422

#### MASTER'S

MA Human Services..... 16

MA International Community Development..... 9

MS Pastoral Ministry..... 29

MS Professional Counseling..... 104

#### CERTIFICATE - GRADUATE

Human Services..... 5

### **Humanities & Foundational Core**

#### ASSOCIATE

AA General Education..... 152

#### BACHELOR'S

BA English..... 4

BA Historical & Literary Studies..... 13

BA Language, Culture & Trade..... 2

BA/BS General Education..... 3

BA/BS General Studies..... 46

BFA Creative Writing..... 19

BS Political Science..... 13

### **Social Work & Criminal Justice**

#### BACHELOR'S

BA/BS Criminal Justice..... 125

Bachelor of Social Work (BSW)..... 78





MASTER'S

Master of Social Work (MSW)..... 51

**Jannetides College of Business,  
Communication & Leadership**

*Business*

BACHELOR'S

Bachelor of Business Administration (BBA)..... 181  
BBA Marketing..... 6  
BS Accounting..... 42  
BS Business..... 78  
BS Business & Professional Leadership..... 138  
BS Finance..... 35  
BS International Business..... 27  
BS Legal Studies..... 15  
BS Management..... 90  
BS Marketing..... 72

MASTER'S

Master of Business Administration (MBA)..... 1

*Communication, Arts & Design*

BACHELOR'S

BA Visual Arts..... 14

BA/BS Broadcasting..... 5  
BA/BS Communication with  
Concentration..... 83  
BA/BS Digital Journalism..... 2  
BA/BS Film Production..... 51  
BA/BS Graphic Design..... 59  
BA/BS Media Ministry..... 1  
BA/BS Public Relations..... 3  
BFA Film Production..... 4  
BS Communication & Mass Media..... 98  
BS Digital Design & Production..... 15  
BS Digital Media & Design..... 114

MASTER'S

MA Art of Design Management..... 13

*Graduate Studies*

MASTER'S

Master of Business Administration (MBA)..... 165

DOCTORATE

Doctor of Strategic Leadership (DSL)..... 31

*Professional Studies*

ASSOCIATE

AAS Aviation Management..... 1



BACHELOR'S

BS Aviation Management.....	27
BS Organizational Leadership.....	150
BS Sport Management.....	75
BS Tourism & Hospitality Management.....	30

MASTER'S

MA Leadership.....	64
--------------------	----

DOCTORATE

PhD Organizational Leadership.....	56
------------------------------------	----

CERTIFICATE - UNDERGRAD

Back-End Web Development.....	1
Organizational Leadership.....	1

CERTIFICATE - GRADUATE

Leadership: Entrepreneurship.....	3
Leadership: Non-Profit.....	2
Organizational Leadership.....	4

School of Music

Music

BACHELOR'S

BA Music.....	18
BM Music Performance.....	2
Bachelor of Music Education (BME).....	21
BS Commercial Music.....	46
BS Worship Studies.....	42

Steelman Library

Classical Studies

ASSOCIATE

AA General Studies.....	3
-------------------------	---

MASTER'S

MA Classical Studies: Arithmetic & Geometry.....	1
MA Classical Studies: History.....	10
MA Classical Studies: Latin & Grammar.....	3
MA Classical Studies: Literature & Rhetoric.....	11
MA Classical Studies: Logic.....	2
MA Classical Studies: Pedagogy.....	69

NON-DEGREE - UNDERGRAD

Dual Enrolled: Classical Conversations.....	1,023
---	-------

Special Programs/Non-Degree

NON-DEGREE - UNDERGRAD

Dual Enrolled.....	3,441
Non-Degree Seeking.....	68

NON-DEGREE - GRADUATE

Non-Degree Seeking.....	4
-------------------------	---





### Undergraduate Totals

Barnett College of Ministry & Theology.....	1,472
College of Education.....	226
College of Natural & Health Sciences.....	549
College of Social Sciences & Humanities.....	964
Jannetides College of Business, Communication & Leadership.....	1,399
School of Music.....	129
Steelman Library.....	1,026
Special Programs/Non-Degree.....	3,509
<b>Total Undergraduate Students.....</b>	<b>9,232</b>

### Graduate Totals

Barnett College of Ministry & Theology.....	399
College of Education.....	205
College of Natural & Health Sciences.....	43
College of Social Sciences & Humanities.....	217
Jannetides College of Business, Communication & Leadership.....	338
Steelman Library.....	96
Special Programs/Non-Degree.....	4
<b>Total Graduate Students.....</b>	<b>1,302</b>

**Total University Enrollment..... 10,534**

*Due to some students having more than one major, department totals will not add up to the totals provided. Undergraduate and graduate totals provided are unduplicated student counts.*

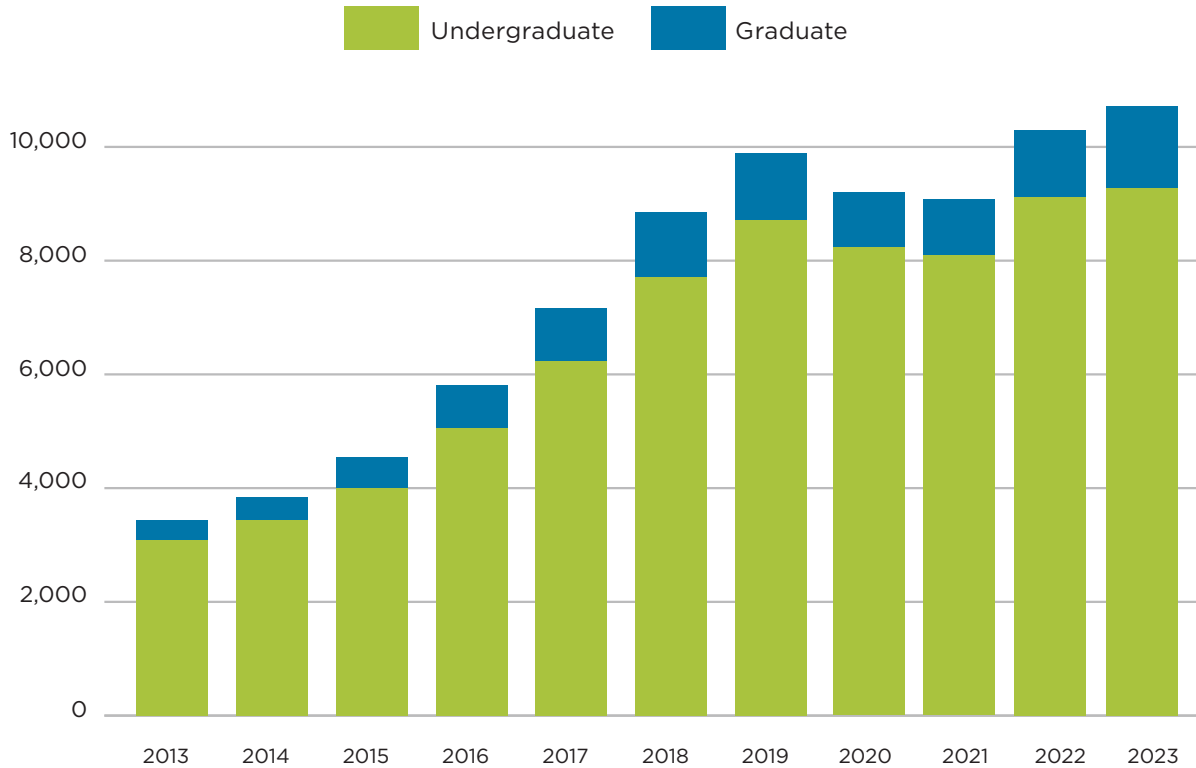




## Total Enrollment, 2013-2023

	2013	2014	2015	2016	2017	2018	2019	2020	2021	2022	2023
Undergraduate	3,083	3,436	3,996	5,054	6,240	7,708	8,717	8,312	8,118	8,840	9,232
Graduate	351	398	542	750	923	1,051	1,177	1,234	1,247	1,204	1,302
<b>Total</b>	<b>3,434</b>	<b>3,834</b>	<b>4,538</b>	<b>5,804</b>	<b>7,163</b>	<b>8,759</b>	<b>9,894</b>	<b>9,546</b>	<b>9,365</b>	<b>10,044</b>	<b>10,534</b>





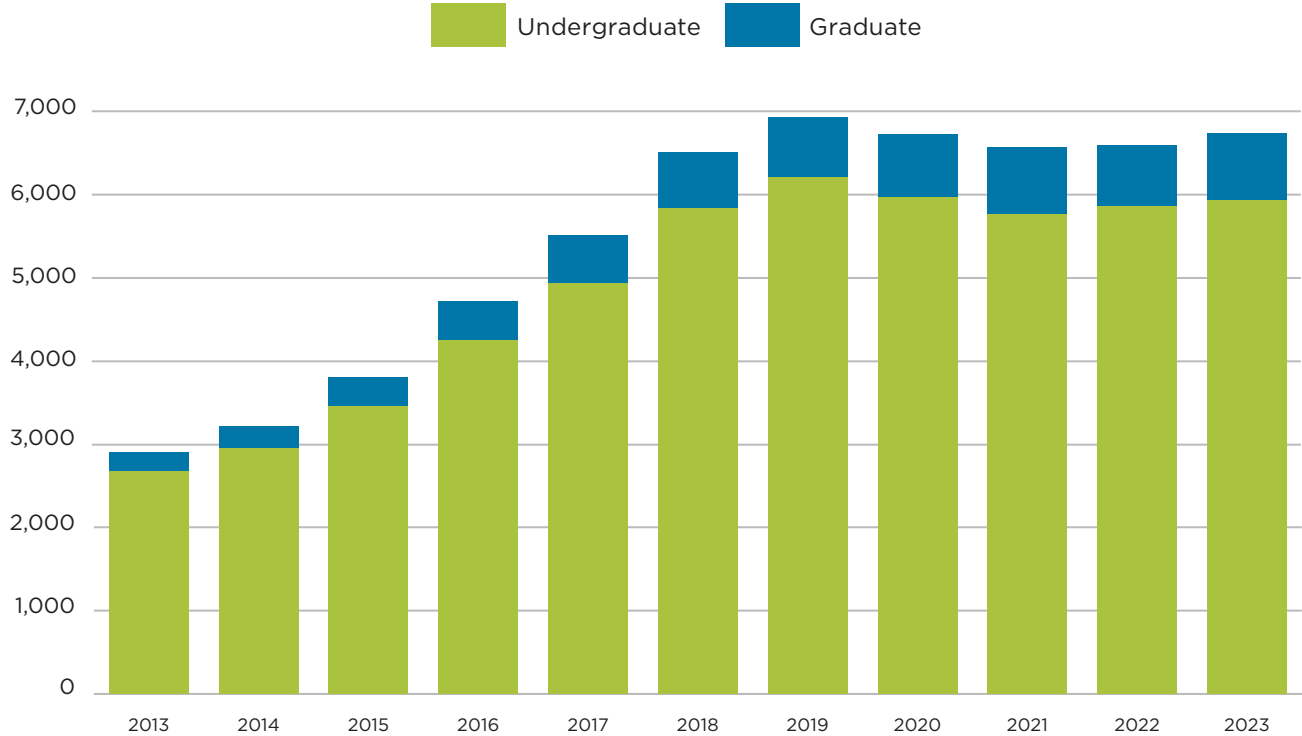


## Full-Time Equivalency Enrollment, 2013-2023

	2013	2014	2015	2016	2017	2018	2019	2020	2021	2022	2023
Undergraduate	2,676	2,955	3,455	4,251	4,932	5,833	6,209	5,962	5,764	5,855	5,927
Graduate	224	260	343	459	567	660	715	752	792	724	798
<b>Total</b>	<b>2,901</b>	<b>3,215</b>	<b>3,798</b>	<b>4,710</b>	<b>5,499</b>	<b>6,493</b>	<b>6,924</b>	<b>6,714</b>	<b>6,556</b>	<b>6,579</b>	<b>6,725</b>

*Full-time equivalency: Three part-time students equal one full-time equivalent student.*





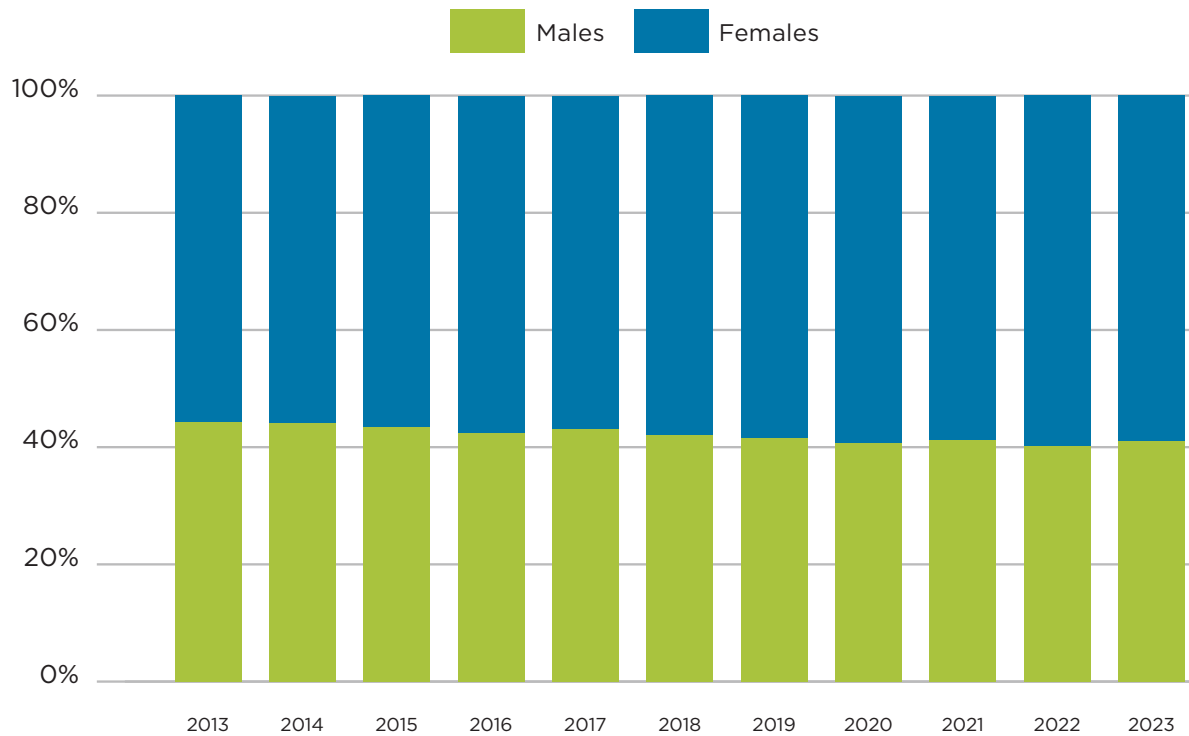




## Enrollment by Gender, 2013-2023

	2013	2014	2015	2016	2017	2018	2019	2020	2021	2022	2023
Males	1,512	1,677	1,972	2,458	3,078	3,685	4,108	3,900	3,869	4,033	4,310
Percentage of Males	44.3%	44.2%	43.5%	42.5%	43.2%	42.1%	41.5%	40.9%	41.3%	40.2%	41.0%
Females	1,898	2,118	2,561	3,324	4,044	5,071	5,786	5,645	5,491	6,009	6,207
Percentage of Females	55.7%	55.8%	56.5%	57.5%	56.8%	57.9%	58.5%	59.1%	58.7%	59.8%	59.0%



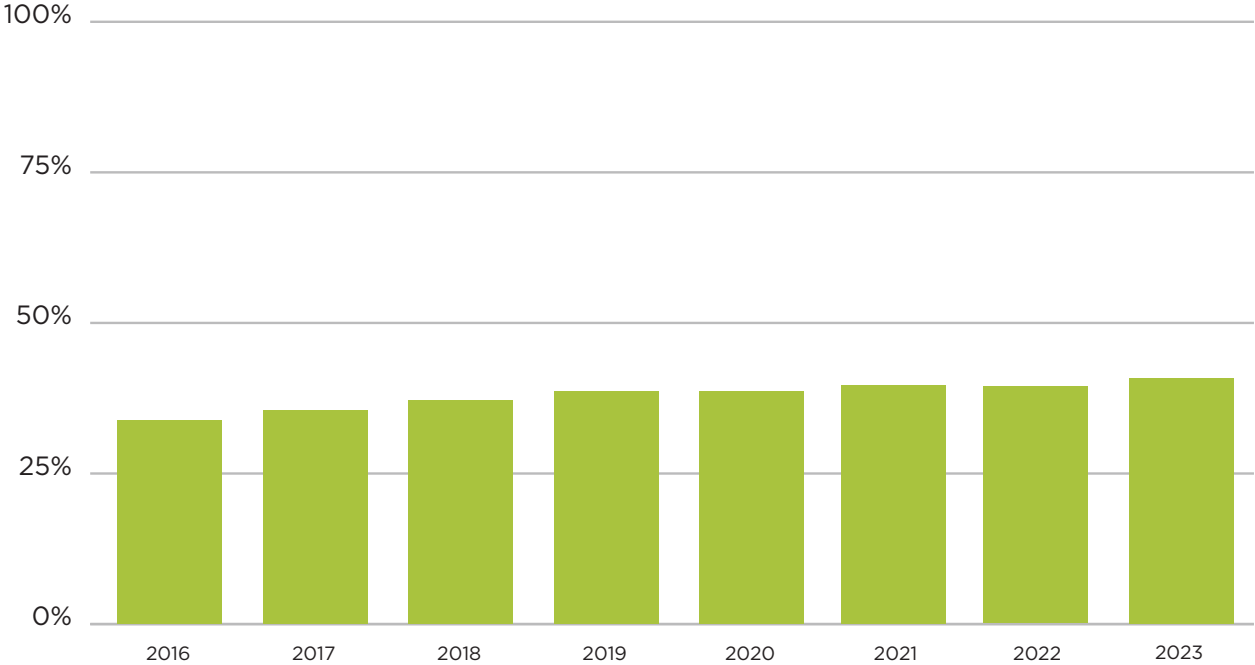


## Enrollment by Race & Ethnicity, 2016–2023

Racial/Ethnic Group	2016	2017	2018	2019	2020	2021	2022	2023
U.S. Nonresident	105	93	106	136	128	197	250	273
Black or African-American	858	971	1,164	1,363	1,209	1,143	1,159	1,221
American Indian/Alaska Native	23	31	42	48	46	67	70	76
Asian	92	124	153	185	194	181	212	207
Hawaiian/Pacific Islander	30	33	37	35	36	33	37	34
Hispanics of Any Race	1,056	1,274	1,787	2,135	2,070	2,164	2,176	2,460
White	3,393	4,301	5,085	5,483	5,374	5,102	5,523	5,464
Two or More Races	3	4	131	278	327	306	344	361
Race/Ethnicity Unknown	198	332	254	231	162	172	273	438
<b>Ethnic Minority Percentage</b>	<b>35.5%</b>	<b>37.1%</b>	<b>39.5%</b>	<b>42.4%</b>	<b>41.9%</b>	<b>43.3%</b>	<b>42.0%</b>	<b>44.4%</b>



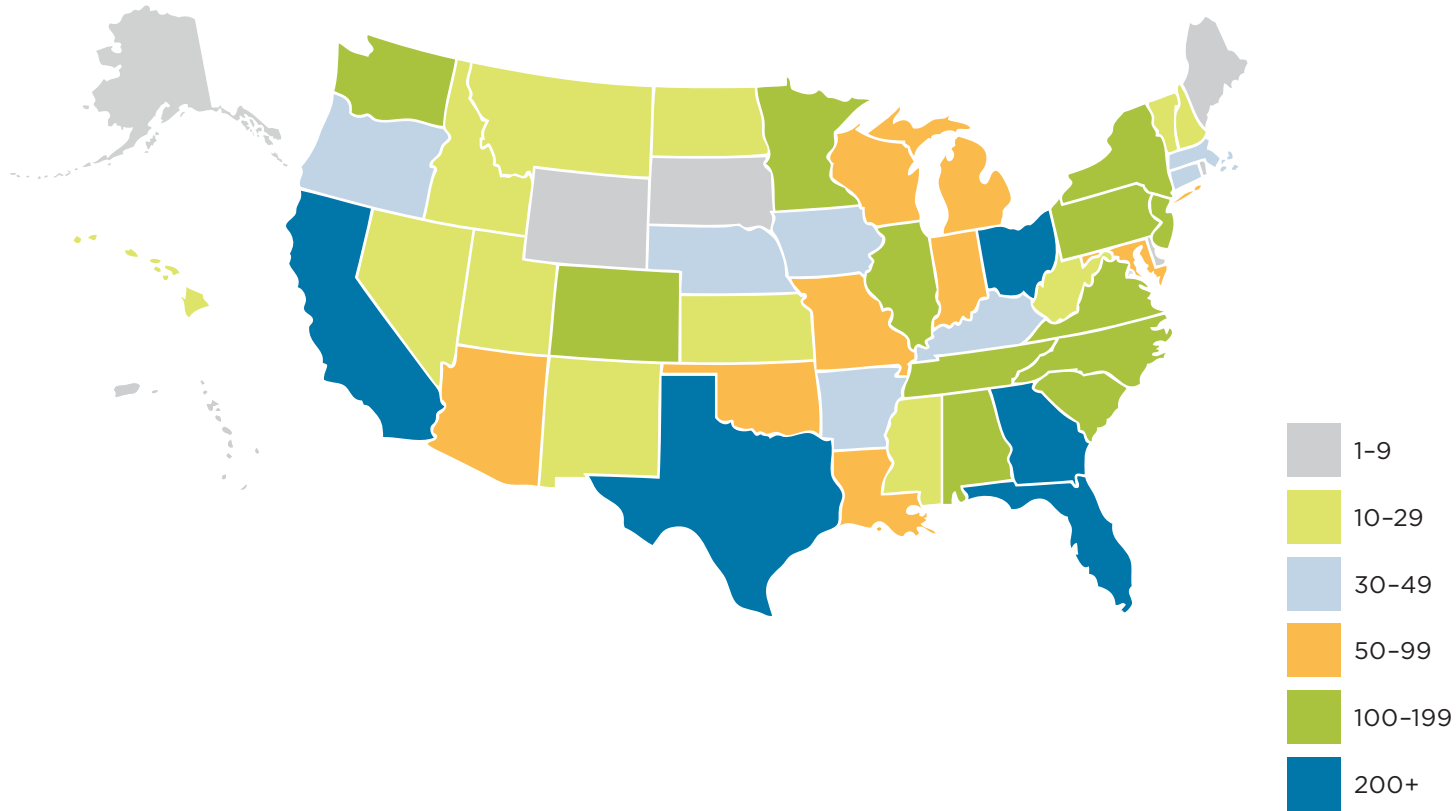
# Ethnic Minority Percentage



## Enrollment by State/U.S. Territory

State/Territory	Enrolled	State/Territory	Enrolled	State/Territory	Enrolled
Alabama	165	Kansas	24	Ohio	252
Alaska	7	Kentucky	36	Oklahoma	87
Arizona	76	Louisiana	60	Oregon	43
Arkansas	49	Maine	6	Pennsylvania	125
Armed Forces Europe	7	Maryland	82	Puerto Rico	7
Armed Forces Pacific	5	Massachusetts	33	Rhode Island	7
California	277	Michigan	82	South Carolina	107
Colorado	102	Minnesota	119	South Dakota	6
Connecticut	38	Mississippi	17	Tennessee	137
Delaware	7	Missouri	88	Texas	535
District of Columbia	5	Montana	13	Utah	11
Florida	6,024	Nebraska	30	Vermont	10
Georgia	241	Nevada	29	Virginia	126
Guam	1	New Hampshire	14	Washington	194
Hawaii	11	New Jersey	106	West Virginia	15
Idaho	19	New Mexico	29	Wisconsin	68
Illinois	170	New York	119	Wyoming	5
Indiana	82	North Carolina	198		
Iowa	30	North Dakota	19		

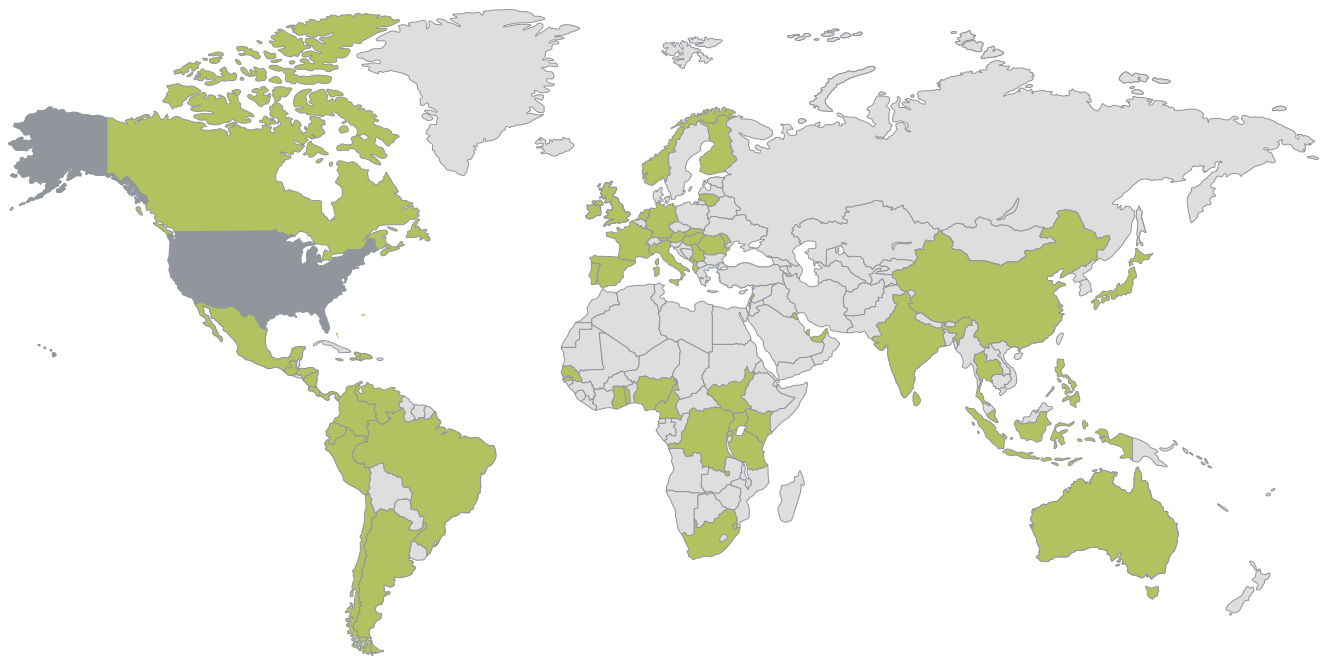




## International Enrollment

Nation	Enrolled	Nation	Enrolled	Nation	Enrolled
Albania	1	Hungary	1	Senegal	1
Argentina	3	India	1	Serbia	1
Australia	1	Indonesia	1	Singapore	1
Austria	3	Ireland	1	Slovakia	1
Bahamas	11	Italy	11	South Africa	4
Brazil	17	Jamaica	3	South Sudan	1
Cameroon	1	Japan	3	Spain	8
Canada	24	Kenya	6	Tanzania, United Republic of	1
Cayman Islands	1	Kuwait	1	Thailand	1
Chile	2	Lebanon	2	Togo	1
China	3	Lithuania	1	Trinidad and Tobago	1
Colombia	9	Mexico	4	Uganda	98
Congo, Democratic Republic of the	1	Moldova, Republic of	11	United Arab Emirates	2
Costa Rica	1	Montenegro	1	United Kingdom of Great Britain and Northern Ireland	10
Curaçao	1	Netherlands	1	Venezuela, Bolivarian Republic of	1
Dominican Republic	1	Nicaragua	4	Virgin Islands, U.S.	1
Ecuador	1	Nigeria	4		
Eswatini	1	Norway	2		
Finland	1	Panama	2		
France	2	Peru	2		
Germany	1	Philippines	1		
Ghana	3	Portugal	1		
Guatemala	2	Qatar	1		
Haiti	3	Romania	1		
Honduras	4	Rwanda	2		
				<b>Total International Students</b>	<b>299</b>
				<b>Percentage of Total</b>	<b>2.6%</b>
				<b>Total Countries</b>	<b>66</b>

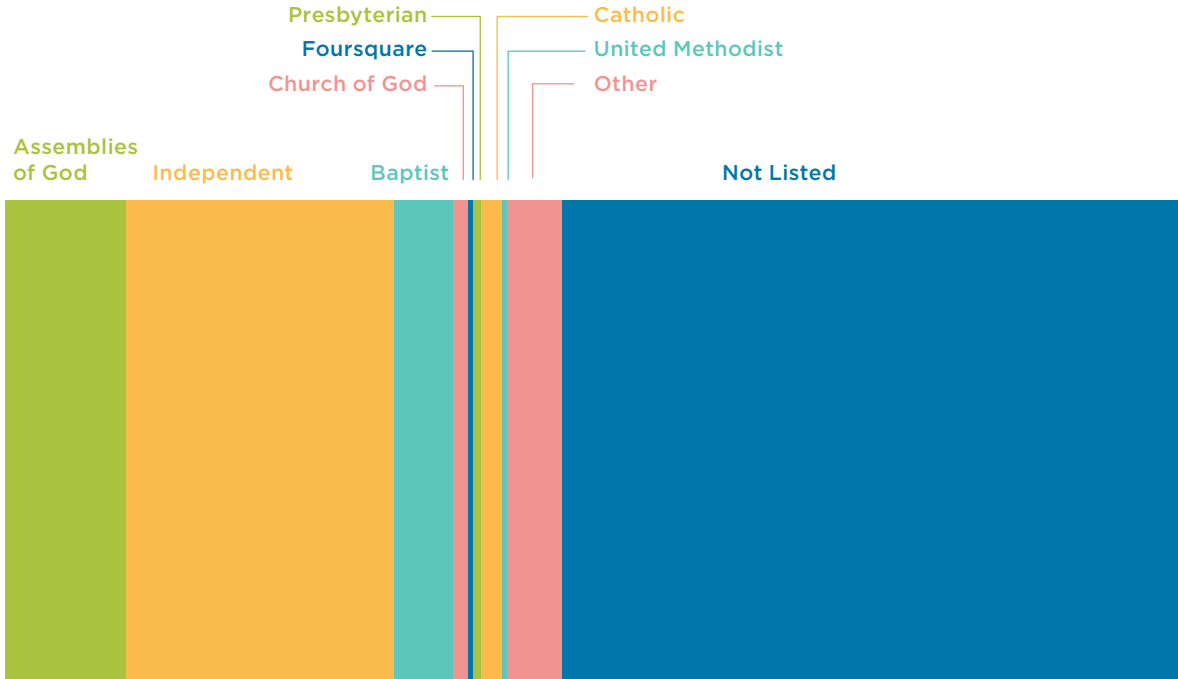




## Enrollment by Denomination

Denomination	2020		2021		2022		2023	
	Number	Percent	Number	Percent	Number	Percent	Number	Percent
Assemblies of God	1,400	14.7%	1,299	13.9%	1,168	11.6%	1,088	10.3%
Independent	2,633	27.6%	2,456	26.2%	2,376	23.7%	2,387	22.7%
Baptist	673	7.1%	612	6.5%	541	5.4%	523	5.0%
Church of God	140	1.5%	136	1.5%	129	1.3%	134	1.3%
Foursquare	75	0.8%	63	0.7%	52	0.5%	39	0.4%
Presbyterian	93	1.0%	68	0.7%	63	0.6%	72	0.7%
Catholic	228	2.4%	195	2.1%	192	1.9%	187	1.8%
United Methodist	92	1.0%	78	0.8%	49	0.5%	44	0.4%
Other	482	5.0%	508	5.4%	509	5.1%	492	4.7%
Not Listed	3,730	39.1%	3,950	42.2%	4,965	49.4%	5,568	52.9%





ENROLLMENT BY DENOMINATION FOR 2023



## Faculty Division & Rank

Division	Professor	Associate Professor	Assistant Professor	Instructor	Lecturer	Total
Barnett College of Ministry & Theology	12	3	2	0	1	18
College of Education	4	4	8	1	1	18
College of Natural & Health Sciences	9	7	8	2	0	26
College of Social Sciences & Humanities	7	13	12	0	0	32
Jannetides College of Business, Communication & Leadership	10	8	4	1	0	23
School of Honors	0	0	2	0	0	2
School of Music	1	4	3	0	0	8
Steelman Library	0	0	2	0	0	2
<b>Total</b>	<b>43</b>	<b>39</b>	<b>41</b>	<b>4</b>	<b>2</b>	<b>129</b>
Administration and Ranked Staff	11	4	5	2	1	23
<b>Grand Total</b>	<b>54</b>	<b>43</b>	<b>46</b>	<b>6</b>	<b>3</b>	<b>152</b>



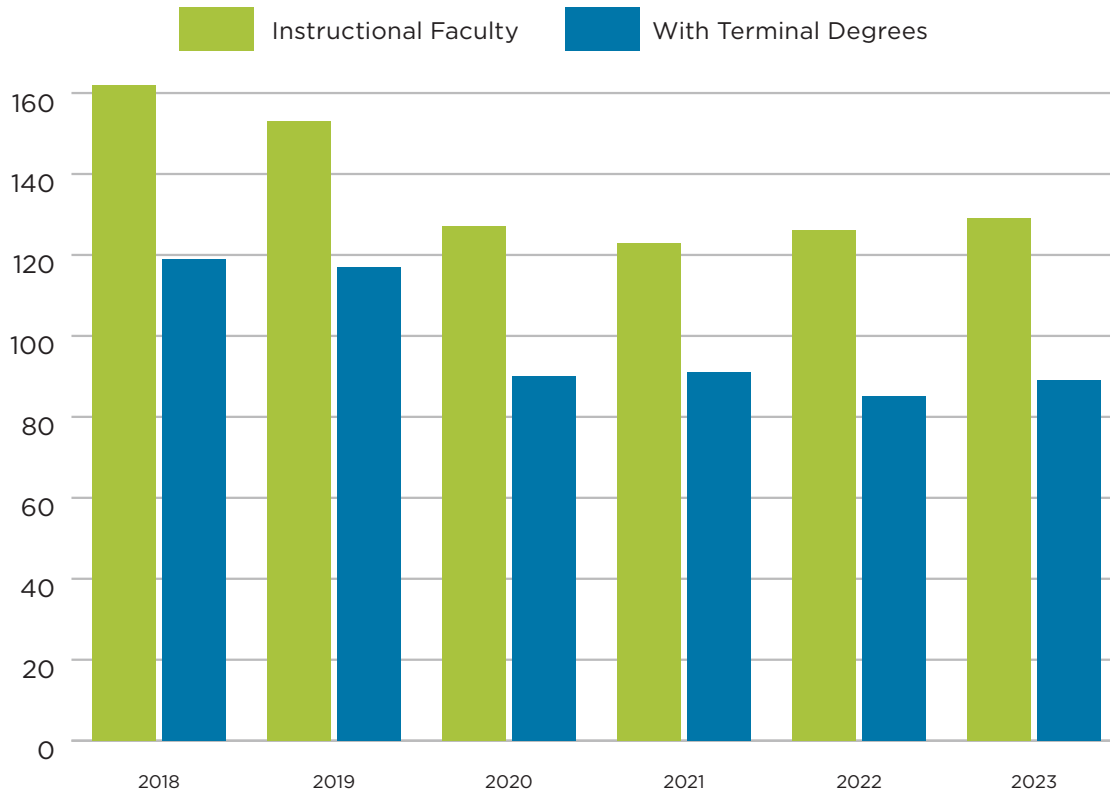
Division	Professor	Associate Professor	Assistant Professor	Instructor	Lecturer	Total
Instructional Faculty	43	39	41	4	2	129
Percentage of Instructional Faculty	33.3%	30.2%	31.8%	3.1%	1.6%	
Total Faculty	54	43	46	6	3	152
<b>Percentage of Total Faculty</b>	<b>35.5%</b>	<b>28.3%</b>	<b>30.3%</b>	<b>3.9%</b>	<b>2.0%</b>	
Instructional Faculty with Terminal Degrees	43	30	16	0	0	89
Percentage of Instructional Faculty with Terminal Degrees	48.3%	33.7%	18.0%	0.0%	0.0%	
Total Faculty with Terminal Degrees	56	31	18	1	0	106
<b>Percentage of Total Faculty with Terminal Degrees</b>	<b>52.8%</b>	<b>29.2%</b>	<b>17.0%</b>	<b>0.9%</b>	<b>0.0%</b>	

PERCENTAGE OF TOTAL FACULTY WITH TERMINAL DEGREES



## Instructional Faculty, 2018–2023

College/Department	2018	2019	2020	2021	2022	2023
Barnett College of Ministry & Theology	25	22	14	22	18	18
College of Arts & Media	34	32	27	29	-	-
College of Behavioral & Social Sciences	19	18	16	16	-	-
College of Education	30	26	23	24	17	18
College of Natural & Health Sciences	24	24	23	20	25	26
College of Social Sciences & Humanities	-	-	-	-	29	32
College of Unrestricted Education	11	13	12	-	-	-
Jannetides College of Business Communication & Leadership	18	17	11	11	22	23
School of Honors	1	1	1	1	2	2
School of Music	-	-	-	-	10	8
Steelman Library	-	-	-	-	3	2
<b>Total Instructional Faculty</b>	<b>162</b>	<b>153</b>	<b>127</b>	<b>123</b>	<b>126</b>	<b>129</b>
<b>Instructional Faculty with Terminal Degrees</b>	<b>119</b>	<b>117</b>	<b>90</b>	<b>91</b>	<b>85</b>	<b>89</b>
<b>Percentage of Instructional Faculty with Terminal Degrees</b>	<b>73.5%</b>	<b>76.5%</b>	<b>70.9%</b>	<b>73.9%</b>	<b>67.5%</b>	<b>69.0%</b>



## Instructional Faculty Demographics

Age	Number	Percent
Under 30	4	3.1%
30-39	21	16.3%
40-49	41	31.8%
50-59	40	31.0%
60-69	18	14.0%
70+	5	3.9%

Percentile	Age
25th %	41
Mean Age	49
75th %	57

Gender	Number	Percent
Male	63	48.8%
Female	66	51.2%

Ethnicity	Number	Percent
Black or African-American	10	7.8%
American Indian/Alaska Native	1	0.8%
Asian	2	1.6%
Hawaiian/Pacific Islander	3	2.3%
Hispanic (Any Race)	9	7.0%
White	104	80.6%
Two or More Races	0	0.0%
Race/Ethnicity Unknown	0	0.0%

<b>Ethnic Minorities</b>	<b>19.4%</b>
--------------------------	--------------



## Student-to-Faculty Ratio

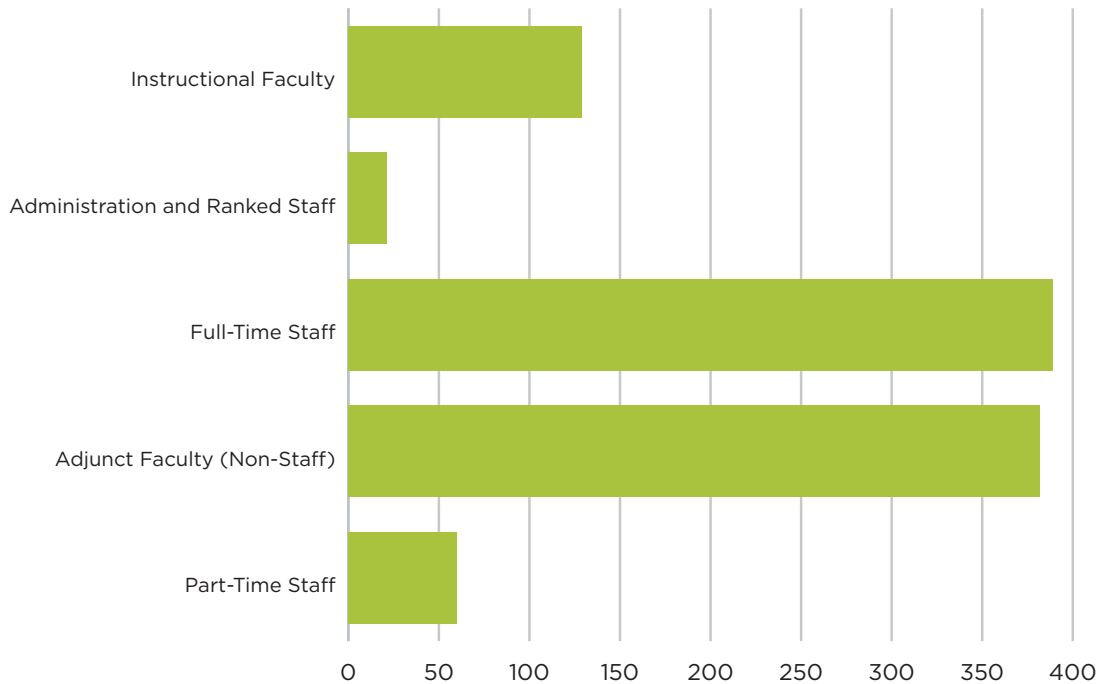
2013	2014	2015	2016	2017	2018	2019	2020	2021	2022	2023
19.5 to 1	18.4 to 1	19.8 to 1	20.7 to 1	20.0 to 1	20.8 to 1	23.4 to 1	28.9 to 1	26.5 to 1	27.3 to 1	26.2 to 1

## Faculty & Staff

Category	Total
Instructional Faculty	129
Administration and Ranked Staff	21
<b>Full-Time Staff</b>	<b>389</b>
Administrative Support Workers	60
Craft Workers	8
First/Mid-Level Officials and Managers	82
Laborers and Helpers	4
Professionals	178
Sales Workers	2
Service Workers	48
Technicians	7
<b>Total Full-Time Employees</b>	<b>539</b>
Adjunct Faculty (Non-Staff)	382
Part-Time Staff	60
<b>Total Employees</b>	<b>981</b>







## 2023 Fall New Undergraduate Students by Delivery Type

	<b>FTIC</b>	<b>Transfers</b>	<b>Re-Admits</b>	<b>Status Change</b>	<b>Non-Degree</b>	<b>Dual Enrolled</b>	<b>Total</b>
SEU Lakeland	596	134	16	26	2	21	795
SEU Online	61	99	45	69	0	102	376
SEU Sites	339	296	34	39	4	129	841
SEU Partnerships	38	14	2	1	65	926	1,046
Florida High School Dual Enrolled	0	0	0	0	0	2,331	2,331
<b>Grand Total</b>	<b>1,034</b>	<b>543</b>	<b>97</b>	<b>135</b>	<b>71</b>	<b>3,509</b>	<b>5,389</b>

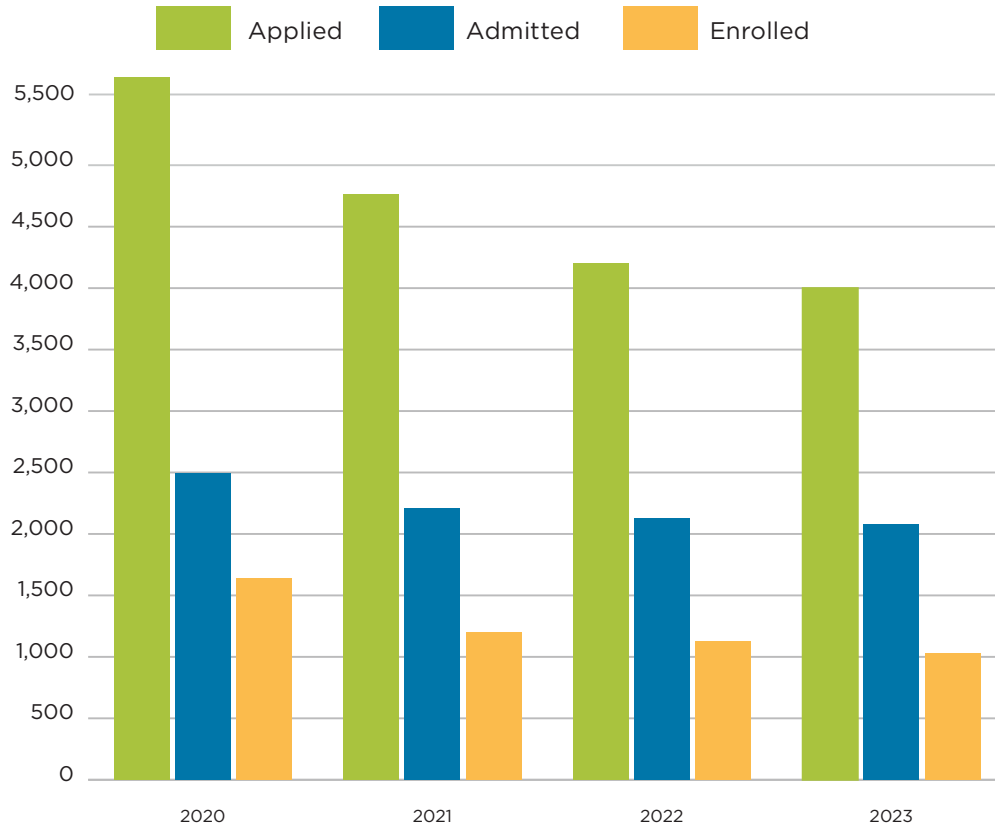




## Applications for Freshman Admission

		Applied	Admitted	Percent Admitted	Enrolled	Percent Admitted Who Enrolled
2020	Male	2,107	984	46.7%	677	68.8%
	Female	3,610	1,509	41.8%	960	63.6%
	<b>Total</b>	<b>5,717</b>	<b>2,493</b>	<b>43.6%</b>	<b>1,637</b>	<b>65.7%</b>
2021	Male	1,766	876	49.6%	497	56.7%
	Female	2,995	1,331	44.4%	706	53.0%
	<b>Total</b>	<b>4,761</b>	<b>2,207</b>	<b>46.4%</b>	<b>1,203</b>	<b>54.5%</b>
2022	Male	1,609	837	52.0%	453	54.1%
	Female	2,597	1,293	49.8%	676	52.3%
	<b>Total</b>	<b>4,206</b>	<b>2,130</b>	<b>50.6%</b>	<b>1,129</b>	<b>53.0%</b>
2023	Male	1,575	849	53.9%	421	49.6%
	Female	2,425	1,233	50.9%	610	49.5%
	<b>Total</b>	<b>4,000</b>	<b>2,082</b>	<b>52.1%</b>	<b>1,031</b>	<b>49.5%</b>





## SAT, ACT & GPA for Entering Freshmen

	25th Percentile	75th Percentile
SAT Critical Reading	520	630
SAT Math	490	590
SAT Composite	1,020	1,210
ACT Composite	20	26

### Average SAT Composite

(Reading and Math Only)

1,105.3

### Average ACT Composite

22.9

*SEU is test-optional for traditional undergraduate admission. Students may choose to submit test scores to benefit their scholarship tier.*

### High School GPA

### Percentage

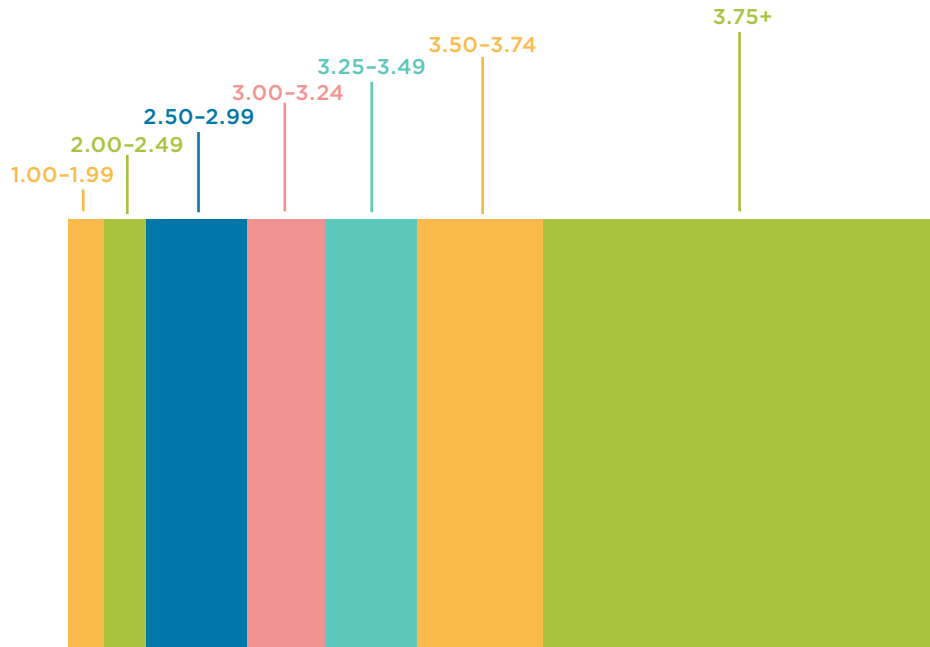
3.75 and higher	41.2%
3.50 to 3.74	12.8%
3.25 to 3.49	9.5%
3.00 to 3.24	7.9%
2.50 to 2.99	10.4%
2.00 to 2.49	4.2%
1.00 to 1.99	3.7%
Below 1.00	0.0%

**Average GPA**

**3.52**

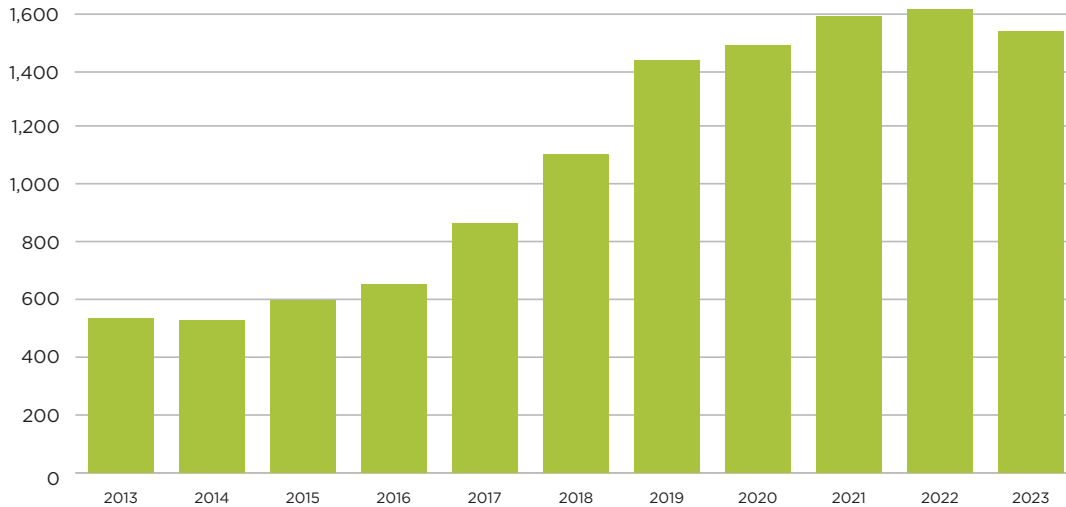


## High School GPAs



## Completions

	2013	2014	2015	2016	2017	2018	2019	2020	2021	2022	2023
Male	240	206	234	277	325	412	545	527	575	616	593
Female	296	322	363	376	537	688	883	952	1,005	987	934
<b>Total</b>	<b>536</b>	<b>528</b>	<b>597</b>	<b>653</b>	<b>862</b>	<b>1,100</b>	<b>1,428</b>	<b>1,479</b>	<b>1,580</b>	<b>1,603</b>	<b>1,527</b>



*These numbers are an unduplicated student count.*





## Completions, 2022-2023

By Gender	Certificate (UG)	Associate	Bachelor's	Master's	Certificate (GR)	Doctoral	Total	Percent
Male	2	57	361	140	1	32	593	38.8%
Female	17	81	575	224	9	28	934	61.2%
<b>By Race/Ethnicity</b>								
American Indian or Alaskan Native	0	0	6	0	0	0	6	0.4%
U.S. Nonresident	1	0	15	44	3	0	63	4.1%
Black or African American	1	16	106	64	1	7	195	12.8%
Asian	0	3	12	8	0	2	25	1.6%
Hawaiian/Pacific Islander	0	0	3	2	0	0	5	0.3%
Hispanic (Any Race)	1	24	172	58	0	5	260	17.0%
White	13	92	586	172	5	45	913	59.8%
Two or More Races	0	1	24	8	0	1	34	2.2%
Race/Ethnicity Unknown	3	2	12	8	1	0	26	1.7%
<b>Total</b>	<b>19</b>	<b>138</b>	<b>936</b>	<b>364</b>	<b>10</b>	<b>60</b>	<b>1,527</b>	

## Completions by College/Department, 2022-2023

Undergraduate	Students	Percentage
<b>Barnett College of Ministry &amp; Theology</b>	<b>339</b>	<b>22.2%</b>
Ministry & Theology	330	21.6%
Bob & Hazel Hoskins School of Mission	9	0.6%
<b>College of Education</b>	<b>42</b>	<b>2.8%</b>
Educator Preparation & Leadership, Undergrad	39	2.6%
LINK	3	0.2%
<b>College of Natural &amp; Health Sciences</b>	<b>119</b>	<b>7.8%</b>
Kinesiology	39	2.6%
Mathematics	2	0.1%
Natural Sciences	30	2.0%
Nursing	48	3.1%
<b>College of Social Sciences &amp; Humanities</b>	<b>282</b>	<b>18.5%</b>
Counseling, Psychology & Human Services	107	7.0%
Humanities & Foundational Core	107	7.0%
Social Work & Criminal Justice	68	4.5%

## Completions by College/Department, 2022-2023

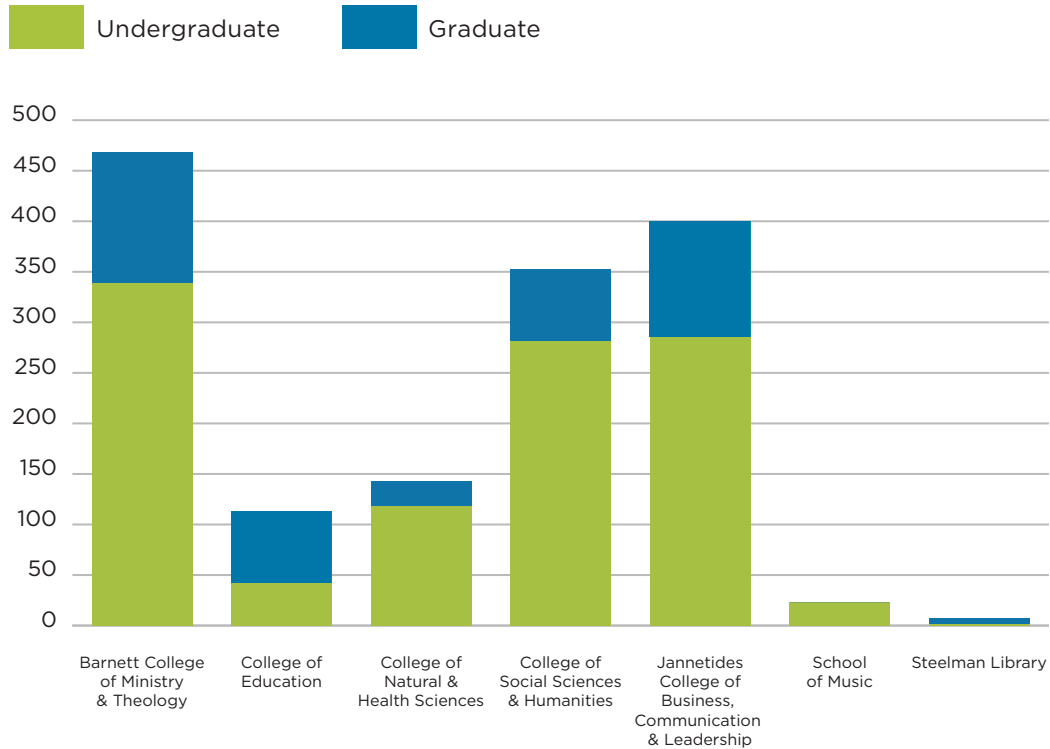
Undergraduate	Students	Percentage
<b>Jannetides College of Business, Communication &amp; Leadership</b>	<b>286</b>	<b>18.7%</b>
Business	135	8.8%
Communication, Arts & Design	84	5.5%
Professional Studies	67	4.4%
<b>School of Music</b>	<b>23</b>	<b>1.5%</b>
Music	23	1.5%
<b>Steelman Library</b>	<b>2</b>	<b>0.1%</b>
Classical Studies	2	0.1%
<b>Total</b>	<b>1,093</b>	<b>71.6%</b>



## Completions by College/Department, 2022-2023

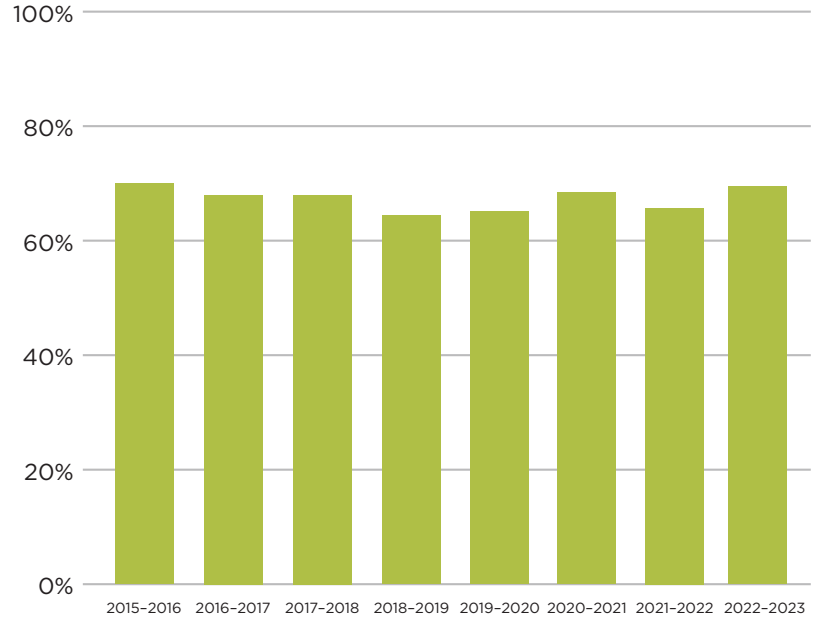
Graduate	Students	Percentage
<b>Barnett College of Ministry &amp; Theology</b>	<b>129</b>	<b>8.4%</b>
School of Divinity	108	7.1%
Bob & Hazel Hoskins School of Mission	21	1.4%
<b>College of Education</b>	<b>71</b>	<b>4.6%</b>
Educator Preparation & Leadership, Graduate	71	4.6%
<b>College of Natural &amp; Health Sciences</b>	<b>24</b>	<b>1.6%</b>
Kinesiology	24	1.6%
<b>College of Social Sciences &amp; Humanities</b>	<b>71</b>	<b>4.6%</b>
Counseling, Psychology & Human Services	31	2.0%
Social Work & Criminal Justice	40	2.6%
<b>Jannetides College of Business, Communication &amp; Leadership</b>	<b>133</b>	<b>8.7%</b>
Communication, Arts & Design	6	0.4%
Graduate Studies	69	4.5%
Professional Studies	58	3.8%
<b>Steelman Library</b>	<b>6</b>	<b>0.4%</b>
Classical Studies	6	0.4%
<b>Total</b>	<b>434</b>	<b>28.4%</b>
<b>Grand Total</b>	<b>1,527</b>	

## Completions by College/Department, 2022-2023



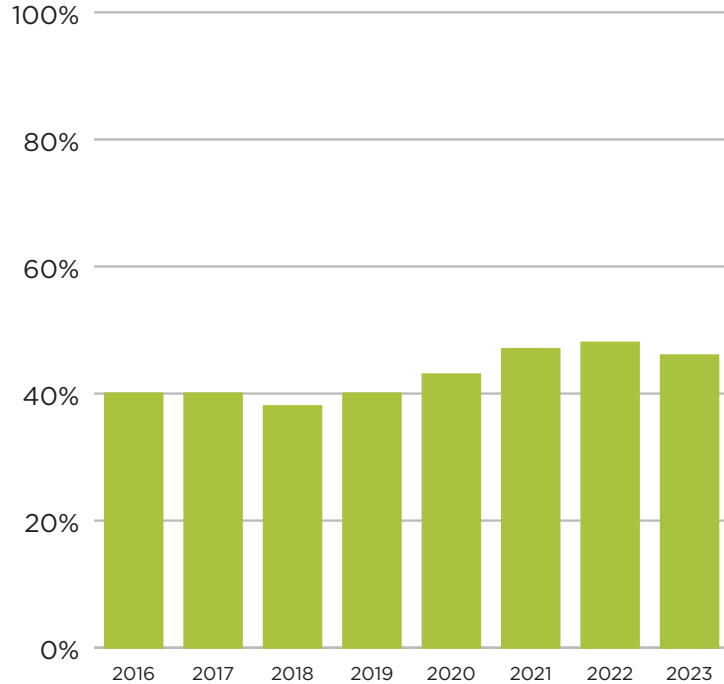
## Retention Rates

Freshman Cohort Year	Percent Returned Following Fall	
2015	<b>70.0%</b>	2016
2016	<b>68.0%</b>	2017
2017	<b>68.0%</b>	2018
2018	<b>64.4%</b>	2019
2019	<b>64.9%</b>	2020
2020	<b>68.3%</b>	2021
2021	<b>65.1%</b>	2022
2022	<b>70.5%</b>	2023



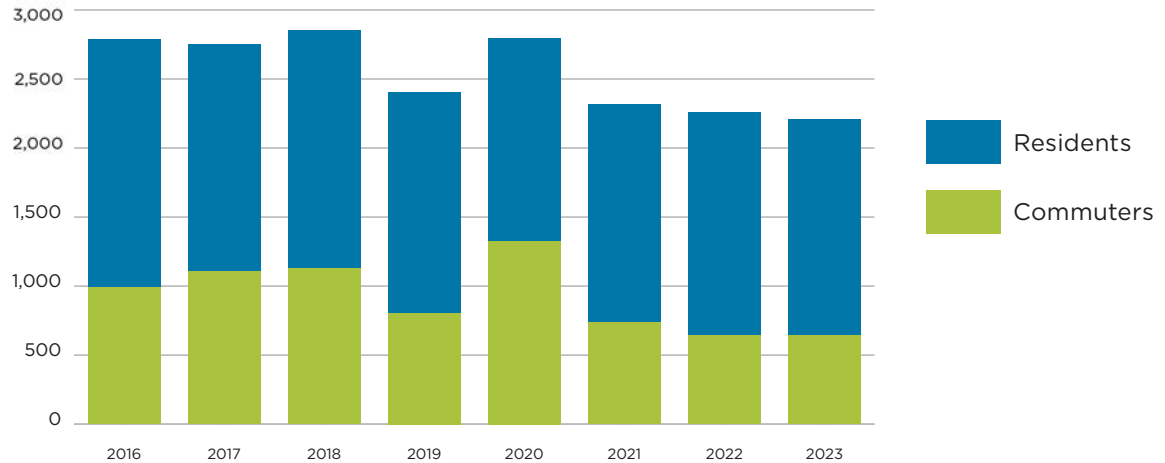
## Graduation Rates

Freshman Cohort Year	Graduated Within Six Years	
2010	<b>40.0%</b>	2016
2011	<b>40.0%</b>	2017
2012	<b>38.0%</b>	2018
2013	<b>40.0%</b>	2019
2014	<b>43.4%</b>	2020
2015	<b>47.1%</b>	2021
2016	<b>48.3%</b>	2022
2017	<b>46.1%</b>	2023



## On-Campus Enrollment

	2016	2017	2018	2019	2020	2021	2022	2023
Commuters	995	1,111	1,133	806	1,333	743	650	627
Residents	1,792	1,637	1,721	1,615	1,464	1,577	1,609	1,584
<b>Total</b>	<b>2,787</b>	<b>2,748</b>	<b>2,854</b>	<b>2,421</b>	<b>2,797</b>	<b>2,320</b>	<b>2,259</b>	<b>2,211</b>





## Housing Capacity

Year	Residents	Growth	Capacity	Capacity %
2014	1,550	7.4%	1,449	107.0%
2015	1,729	11.5%	1,434	120.6%
2016	1,792	3.6%	1,843	97.2%
2017	1,637	-8.6%	1,842	88.9%
2018	1,715	4.8%	1,836	93.4%
2019	1,615	-5.8%	1,834	88.1%
2020	1,464	-9.3%	1,699	86.2%
2021	1,577	7.7%	1,699	92.8%
2022	1,609	2.0%	1,791	89.8%
<b>2023</b>	<b>1,584</b>	<b>-1.0%</b>	<b>1,764</b>	<b>89.8%</b>



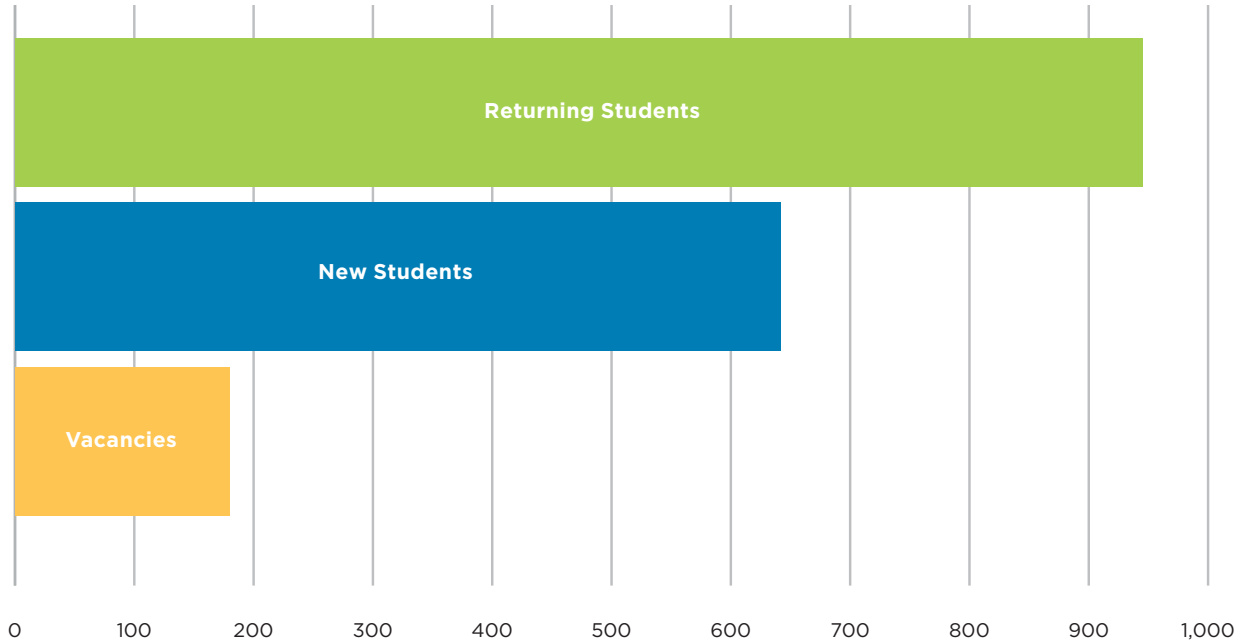
## Campus Housing

Residence Hall	Capacity	Returning Students	New Students	Total	Vacancies
Bauer	199	11	133	<b>144</b>	55
Buena Vida West	153	60	74	<b>134</b>	19
Buttercup	18	15	1	<b>16</b>	2
Destino	254	214	31	<b>245</b>	9
South Pointe	65	44	14	<b>58</b>	7
<b>Male Totals</b>	<b>689</b>	<b>344</b>	<b>253</b>	<b>597</b>	<b>92</b>

Residence Hall	Capacity	Returning Students	New Students	Total	Vacancies
Aventura	255	190	50	<b>240</b>	15
Bethany	178	11	157	<b>168</b>	10
Buena Vida East	206	101	96	<b>197</b>	9
Buttercup	29	24	4	<b>28</b>	1
Esperanza	260	218	17	<b>235</b>	25
South Pointe	4	3	1	<b>4</b>	0
Valencia	143	51	64	<b>115</b>	28
<b>Female Totals</b>	<b>1,075</b>	<b>598</b>	<b>389</b>	<b>987</b>	<b>88</b>
<b>Undergraduate Total</b>	<b>1,764</b>	<b>942</b>	<b>642</b>	<b>1,584</b>	<b>180</b>



## Campus Housing





*For we are God's handiwork, created in  
Christ Jesus to do good works, which God  
prepared in advance for us to do.*

*— Ephesians 2:10*





Office of Institutional Research

1000 Longfellow Blvd. | Lakeland, Florida 33801 | 863.667.5408

[SEU.edu](http://SEU.edu)